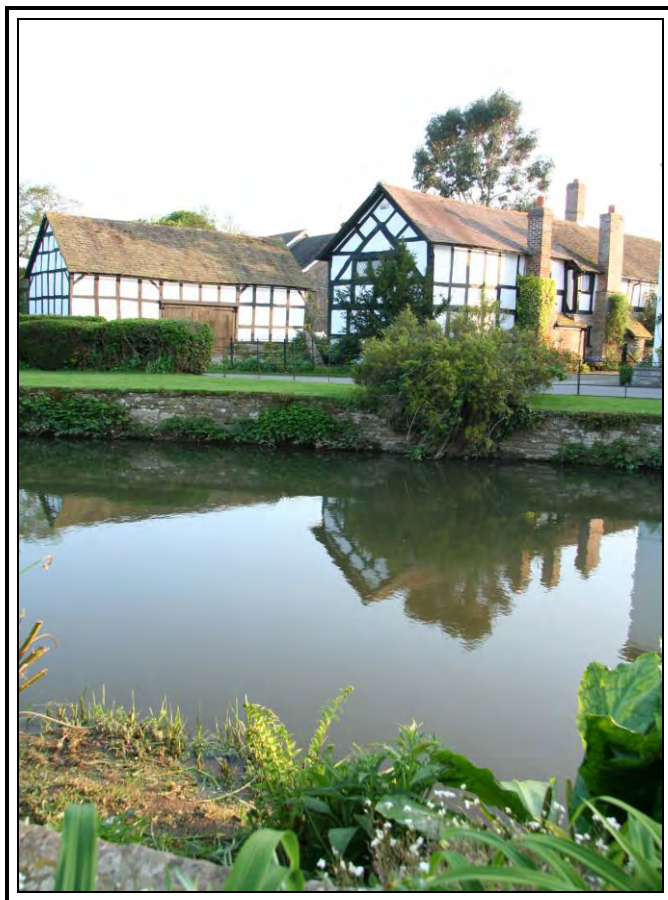


THE EARDISLAND PARISH MAGAZINE

MAY 2008

ISSUE 107



Arrow Lawn, May 2008.

CHURCH SERVICES THROUGHOUT THE BENEFICE

Sunday 18 May – Trinity Sunday		
9.30 am	Holy Eucharist BCP	Eardisland
11.00 am	Sung Eucharist for Luctonians 60th anniversary	Kingsland
3.30 pm	Holy Eucharist	Leinthall Earles
<i>Leinthall Earles closed for repairs after this service until the end of September</i>		
6.30 pm	Choral Evensong BCP	Kingsland
Tuesday 20 May		
7.30 pm	Archdeacon's Visitation to Leominster Deanery	Kingsland
Sunday 25 May – 1st after Trinity		
8.00 am	Holy Eucharist BCP	Kingsland
9.30 am	Holy Eucharist CW	Eardisland
11.00 am	Sung Eucharist CW	Kingsland
11.00 am	Matins BCP	Aymestrey
Sunday 1st June – 2nd after Trinity		
9.30 am	Holy Eucharist CW	Eardisland
11.00 am	Choral Matins BCP	Kingsland
11.00 am	Holy Eucharist BCP	Aymestrey
6.30 pm	Holy Eucharist BCP	Kingsland
Sunday 8th June – 3rd after Trinity		
8.00 am	Holy Eucharist BCP	Kingsland
9.30 am	Matins BCP	Eardisland
9.30 am	Holy Eucharist CW	Aymestrey
11.00 am	Sung Eucharist CW	Kingsland
Sunday 15th June – 4th after Trinity		
9.30 am	Holy Eucharist with Baptism	Eardisland
11.00 am	Sung Eucharist BCP	Kingsland
3.30 pm	Evening Prayer	Aymestrey <i>(LE closed)</i>
6.30 pm	Choral Evensong BCP	Kingsland

In this issue:

Church Services	2 + 31	W.I.	18
Index	3	Bowling Club	18
Editorial	3	Orchards	19
Dates	4	EH + HS	21
Correspondence	5	Weather	23
Nigella's Report	6	Records	23
Bishop's Letter	9	Volunteers	24
Parish Council	10	Age Concern (and I am!)	25
Fun Day	11	Leominster Museum	26
Boot Sale	12	Contacts	30
Neighbourhood Watch	13 + 18	Flower Festival	32
Who's Who?	16		

EDITORIAL

Do you want an exiting life taking flak, verbally fighting to the last? Then join the Parish Council! After various rather wearisome meetings, the planning authorities have granted permission for the International Birds of Prey Centre on the site of the old Dancing Tree – the minutes of the public meeting here in the village are available in the dovecote, as are the minutes of all the Parish Council meetings. At the annual Parish Council meeting, Serena Askew was re-elected by the council as the Chair.

I believe that the Parish Council genuinely wishes to improve communication between villagers, those in nearby areas and elected representatives, both to affect the life and times of the village and also accurately to inform the County Council of our views. The Clerk, Andrea Armour, refers to this on page 10. Please give this some thought and respond if you can.

Leaving all this excitement to one side, there are all sorts of things going on; all the relevant dates are printed on page 4.

Summer seems to have arrived, at least for a few days, so I'm off to the greenhouse to do what I should have done ages ago and sow some seeds.

Chris Bivand

EARDISLAND PARISH MAGAZINE DATES 2008

Copy Date	Projected distribution date
Friday 4 th July	Friday 18 th July
Friday 5 th September	Friday 19 th September
Friday 21 st November	Friday 5 th December

Please note that the actual delivery dates depend upon a number of factors, including the time to prepare the copy, the printer's commitments and the distributors' time.

VILLAGE DIARY

<i>Date</i>	<i>Event</i>
Sat. 24 th – Mon. 26 th May	Flower Festival, St Mary the Virgin
Saturday, 7 th June	Car Boot Sale, Recreation Ground
W/E 21 st /22 nd June	Open Gardens
Saturday 12 th July	Village Fun Day
Sunday 24 th August	Duck Races, bridge 2.30pm
Saturday 13 th September	Eardisland Village Show
Friday, 3 rd October	Harvest Supper, VH – details later
Saturday, 1 st November	Halloween Party – details later
Tuesday, 25 th November	Christmas Bingo, VH
Saturday, 29 th November	Decorated Christmas Tree comp. – details later
Saturday, 13 th December	Christmas Party, VH – details later

PARISH COUNCIL MEETING DATES, 2008

Thursday 26 th June	Village Hall, 7.30pm
Thursday 31 st July	Village Hall, 7.30pm
Thursday 11 th September	Village Hall, 7.30pm
Thursday 30 th October	Village Hall, 7.30pm
Thursday 27 th November	Village Hall, 7.30pm

CORRESPONDENCE

Kingsland and Eardisland Hospice Friends

There is not very much to report this time, but a reminder that our Morrison's collection takes place on Friday June 20th. If you could spare an hour or two on that day we would be most grateful. Please give either myself or Beryl a ring with your availability times.

My apologies for not including in the last magazine, our thanks to the Millennium Fund who paid the Village Hall costs for our soup lunch. Thank you all for your continuing support for St Michael's Hospice.

Dorothy Brown: 388389 & Beryl Hoda: 388131

Thanks . . .

June, Lindy and Tina thank all friends most sincerely for their kind wishes and generous donations and support at Bill's memorial service.

At no time has that phrase meant more:

“It's the thought that counts”.

June Manzoni

VOLUNTEERS WANTED!

OPEN GARDENS: 21 - 22 JUNE 2008

Volunteers are wanted to help with our annual Open Gardens weekend again this year.

If you can spare an hour or two to either direct car parking or help sell tickets and/or plants/bric-a-brac please contact Gill Richards, Barry Freeman or Serena Askew as soon as possible. It would help if you can tell them which day and what time would suit you. The rotas are organized in hourly slots commencing at 10.30am and finishing at 4.30pm on each day.

Thank you in advance,

Serena Askew

Dear parishioners

As I have done in other years I include in this month's magazine the report of the last year as given at the AGM of St Mary's Church. I hope you find it interesting. That is looking back to 2007, of course - now we must look to the future. The big news of 2008, and indeed the big challenge, is to launch an appeal for the new heating system. As you may know, the necessary monies



cannot be raised from grant making trusts and so it is up to us to dig deep and to do our very best to raise the £80,000 needed. What a challenge! I have launched many challenges and I know how generous people can be both from their own pockets and also with their time and energy in organising and supporting fund-raising events. There is a fund-raising committee who have worked hard, and continue to do so, to think of ways of appealing to those outside the village; but it is our church and it is

there for our use in the years to come and so let's shoulder our responsibility and grasp this chance with both hands. We may even enjoy it! There will be a handout with this magazine and copies in the church, so do respond if you are able and let's get our church a bit warmer.

God bless you all,
Nigella

The Annual Report for Eardisland 2007-8

Once again the time has come round for me to give my annual report, the seventh such one. We have, I think, had a good year with much progress to the fabric of the church. First a newly acquired space with the moving up of the choir stalls and magnificent new lighting in the nave. The space opened up at the front of the nave will give us plenty of room for a nave altar to be used with Common Worship services. This is not new to you all, as we were forced to use one during the repairs to the chancel roof and many of you commented on how helpful it was to be able to see and feel part of the consecration. When the old pipework has also gone with the installation of new heating we will be able to plan the area; but I'm getting a bit ahead of myself by mentioning the heating! The organ, too, has had an inspection and the work necessary is to be carried out soon. A new cruet set and the Paschal candle stand have been purchased in memory of the Philip, who always wanted both. A plaque will be made for the candle stand to acknowledge his love of this church.

The graveyard may look the same, but I am pleased to say that it now has a magnificent up-to-date plan of grave spaces. This is a legal requirement which we have not carried out before; it also aids relatives searching for the graves of their forebears. A very big thank you has to go to a Brian Thomasson for carrying out the survey and drawing up the plans in duplicate as well as making alphabetical lists and matching the numbers with those in the burial book - no mean feat!

We had six funerals or memorial services: for Bill Jones, Gordon Beckett, John Hoden, Peter Hogg, Bill Manzoni and Lena Prosser. It is always so sad to say farewell to old friends, especially when their going reduces the congregation, and we miss them so much.

On a brighter note we had three weddings - Christopher and Katie MacNeill, Robert and Carla Knowles, and Henry and Elizabeth Simpson. Always exciting occasions and I do love weddings! It was also good to welcome six children into the flock by baptism : Millie Dyer, Rosemary Davies, Reuben Underwood, Leah Wilde, Samuel Gough and Matthew Smith. We also had the confirmation of Tristram Blyth, who is now a competent server along with sister Abbie. I do want to take this opportunity to thank them both all they do to keep me in order.

Once again, the Open Gardens event in June brought in much-needed cash and was enjoyed by all who came to see your lovely gardens. I don't know how you do it, I can't even find time to keep up with lawn cutting! Those who served food worked very hard and the numbers serving don't seem to grow, even though the customers do. Perhaps there are some more of you out there who can cut a piece of cheese or cake. If that fazes you, everyone can wash up, so think about it.

The fete/show/fun-day clashed with Kingsland fete and so I was only able to put in a very fleeting attendance. It would be good if we could avoid such clashes in future but I know it is difficult. Well done to all who entered exhibits for the show and those who worked hard to put on this event.

There are a great number of people to thank for their help over the last year. We certainly could not have such good and joyful services without music and Annette is unstinting in her dedication, not only week by week, but also in getting the choir together for occasions such as Harvest, Christmas carols and Easter. It is such a joy to have an introit on festivals, and the carol service is much improved with the choir's input. Abbie's flute playing is also a great addition to our worship - dare I suggest flute led Taizé responses to intercessions in the future?

Alister Hoda has now joined Dian as a chalice-bearer, and it's good to have his calm spiritual presence in the sanctuary. Once again we thank Barry and Kathy for their input into the exhibition for our many visitors, and since John's

death and Doris moved to a nursing home, Barry has taken on the opening and closing of the church - thank you, Barry.

We thank Sue Threlfall and the bell-ringers, but I have to mention how sad it is that we have no ringers from the village any more. Perhaps some of you might be interested in learning the art and, let's face it, the exercise one gets is excellent and much cheaper than a gym subscription! It is a fact that the church is fuller on the days that the bells are rung.

Pat Roche and her band of floral experts continue to beautify the church week by week. We look forward to this year's Flower Festival, once again with the hard work being done by Esther Simpson – thank you in advance, Esther.

Our PCC members have worked hard this year as always - there is a lot to running even a small village church. Many of you have been serving a long time and so I appeal for others to come forward with new ideas and vision; we would certainly welcome you. Robert Simpson has put in a good many years as PCC member and Deanery Synod representative. He feels he now has to retire but I do thank him and wish him well. George Alderson has once again kept the books immaculately and as an ex-officio member of the PCC is generous to us with his time.

Overall responsibility for the church rests, apart from me, with the two churchwardens and I do want to thank them both for their time, concern and support. Serena seems to have boundless energy and certainly gets things done. She has taken on a lot with the new lighting and now the Appeal for our new heating system. I don't know what David thinks about it all, but we are grateful - thank you, Serena! Jim is a tower of strength, keeping a firm but quiet hand on the tiller - a tiller often taken over by these two rather impatient and headstrong women. It is wonderful to know that behind it all is Jim making sure things are done correctly and the paperwork completed - with a copy to me!

Finally, what of the future? Well, we have during the next year to launch the heating appeal, which when successful will enable us to have a church which is really welcoming to those who attend. This will mean hard work for the PCC and some deep digging into pockets for the whole community - that is, all those who value the church and my ministry being here in the future. If the numbers attending church on Sunday fall we will not be able to pay our parish share and the church will be closed - it's a plain but simple fact. If those who do not come regularly to church are prepared to donate an annual sum for its upkeep we may avert this catastrophe. I cannot stress too strongly that although the fabric is important and we need to maintain it, it is people who make the church viable, people who pay week by

week for a priestly ministry who make sure that the building doesn't just become a historic building to visit and wonder at.

I am eternally optimistic about the success of the venture to raise this money. The Appeal Committee are working hard to find support from outside the community, but we are all responsible for our own giving. I know we can do it and it may even be fun!

Thank you all so much for your attendance here this evening and for your support.

Revd NJT

LETTER FROM THE BISHOP OF LUDLOW

“I am who I am” is the usual translation of God’s name given to Moses at the burning bush. Jonathon Sacks says that the literal translation should be “I will be what I will be”.

This is significant for us because it indicates God is the God of the future as well as the present and the past. We have been remembering in recent months how God sent Moses back into Egypt to bring the Hebrew nation out of slavery. It was an enormous task but the escape from Egypt gave them an identity and a calling as God’s people.

Through the death and resurrection of Jesus Christ we discover our identity as the Christian church and are called into the future by God to witness to his nature and loving purposes for all humankind.

At Pentecost we celebrate the outpouring of God’s holy spirit on the first disciples and remember how they went out into all the world to follow the God who will be.

This has huge significance for us as we face up to the great issues facing us in the world today – the future of the world and its environment – feeding a rapidly increasing world population – sexuality – migration - local services such as schools, post offices and hospitals. There are no easy answers to any of these questions and they will not be found in a book. The message of the Bible and the message of Pentecost is that we believe in a God who calls himself “I will be what I will be” and his spirit leads us into the future to discover and discern his purposes.

Somebody might be tempted to ask what all these huge issues which face humankind are to do with the church. The answer is that we shall want to join in solidarity with all the rest of humankind of whatever faith, political creed or difference to face up to the future because we believe in the one God who is the source of all life and has created all men and women in his own

image. Therefore we must treat one another with the same respect, dignity and love with which God himself deals with us.

That is why it is exciting to be a Christian in the 21st Century.

+ Michael

EARDISLAND PARISH COUNCIL

The Parish Council is looking to improve the way we communicate with the parishioners. Currently the Parish Magazine, notice board and the Dovecote are used to display information such as agenda's for meetings, minutes and articles. The Hereford Times is used occasionally and we are hoping to utilise this useful column more to keep people informed of forthcoming meetings. During our last meeting it was suggested we could have an Electronic notice board whereby I could email residents with copies of minutes and agenda's. (This would be subject to checks with the Data Protection office). The Parish Council have had an offer from two people within the village to build a website for the Parish Council which I could then manage, this is a very exciting offer and received positive response from the Council. We are now asking you to let us know what you would like to see from the Parish Council in the Parish Magazine, what information do you want printed in the Hereford Times? If we have a Parish website what information would you want on it? All your suggestions would be welcome and can be made to myself, a Parish Councillor or the Editor.

Ideas for future articles from the Parish Council include: Planning guidelines and public participation in Parish Council Meetings.

Members of the public are welcome to attend our monthly meetings and copies of the minutes are available at the Dovecote. If you would like a topic to be discussed by the Parish Council please contact the Clerk. The Parish Council's next meeting is June 26th 2008.

Andrea

Parish Clerk

01568 613729

andrea@andreaarmour.wanadoo.co.uk



EARDISLAND VILLAGE FUN DAY 2008

A big thank you to all those who have come forward with offers of help, although there is plenty of room for more volunteers! Thanks also to Mick from Green Elms and Lucton School for the use of their PA systems on the day which will make life a lot easier.

As with last year, the Fun Dog Show will take place in the arena where our lovable friends will be put through their paces with some fun and games and prizes awarded accordingly. This is open to all dogs and their owners who can register on the day at a cost of just 50p.

The Tug-O-War looks set to be bigger and better than last year with teams, hopefully, competing from neighbouring villages. Anyone who fancies their luck is welcome to enter at a cost of £5 per team. Will 'The Cross Inn' win again this year?!

The Children's Fancy Dress Competition is open to all youngsters under the age of 13. All entrants will receive a small prize and entrance is free! Main prizes will be awarded for the most original costumes in the judge's opinion with a special prize for the one best showing the child's own originality.

As a special treat this year, Jemima or one of her staff from the Bird of Prey Centre will be attending the show and flying some of Eardisland's newest residents! That promises to be truly spectacular.

In addition to all the old favourite such as the beer tent and bouncy castle, refreshments will be on sale in the village hall including burgers, hot dogs and homemade cakes. Raffles, competitions, a cake stall, fruit and veg. stall, plant stall, stalls for gardeners, book stall and live music are just some of the planned entertainment. And remember, entrance is FREE!!

Even in the event of bad weather the Fun Day will still take place with as much as possible, including the children's Fancy Dress, being transferred to the Village Hall.

So remember to make a note in your diary

COME RAIN OR SHINE THE EARDISLAND VILLAGE FUN DAY

12TH JULY 1PM TO 4.30PM

Many thanks – Margaret

01544 388097

margaretmilchard@btinternet.com

CAR BOOT SALE

SATURDAY, 7TH JUNE

RECREATION GROUND BEHIND VILLAGE HALL

BOOTS, MIDDAY – MEMBERS OF THE PUBLIC, 1.00PM

COST: £5 PER BOOT (in aid of Village Hall funds)

***Please contact Claire 01544 388832 or Jill 388323
or e-mail speker@talktalk.co.uk***

WHITE SWAN

NEIGHBOURHOOD WATCH

The team continues to meet enthusiastically and we were not too disappointed at the turnout for the meeting in the Village Hall on the 11th March. PC Charles Naylor (Crime Prevention Officer of West Mercia Police) updated us on the wider issues of Neighbourhood Watch (NW) across Hereford. He also presented us with some specific and manageable ideas for development within Eardisland which we raise in this issue.

Community Response Sheets

Thank you for the significant number of you who took the time to respond. The returns have generated a number of ideas for the team to develop. In summary, the team has been asked by you to explore:

- Increased numbers of NW signs on approach roads to the village
- Regular information updates on crime prevention and
- Information on local crime trends
- Improved communication between team members and the community

Team Membership and Parish coverage

The appeal for new team members has been hugely successful and we are delighted that Mike Coleburn, John Holding, John Hope and Brian Pollard have agreed to join the team. Sadly Chris Wolland has had to stand down because of family commitments though his knowledge, encouragement and expertise has helped us enormously. Together with CSO Donna Jones, the team is finalising a network of coverage and support across this parish. It is aiming to allow each team member to be identified with a particular 'parish patch', and more details will be published in the July edition of the Parish Magazine.

Crime Trends

1. Shed burglaries

As we approach the start of the gardening season, it is becoming evident that the numbers of shed/garage burglaries in the area are increasing. Since February, there have been 22 shed/garage burglaries across Herefordshire division.

The most common property being stolen from the majority of these offences are power tools, particularly Stihl trimmers. It is worth noting that offences are predominantly occurring overnight on Monday and Tuesday. Whilst figures are not exceptionally high, as we continue into the summer season these offences will undoubtedly continue to increase. Anyone with any

outbuildings needs to make sure that they are secure at all times to prevent any further break-ins.

Some good prevention tips!!

- Ensure that your shed is in good condition.
- Use the garage for the car and not the household rubbish, and it will be far more difficult to establish if you are at home.
- Fit good locks to the shed and garage doors.
- Install security lights to illuminate your garden. Sensors can switch lights on when a moving body is detected
- Keep shrubs, hedges and large plants cut back – they can provide a screen for thieves to work behind.
- Check your boundary fences walls and gates. Keep them in good repair as they do provide a useful barrier to the would-be thief. The harder it is for him to get in, the more suspicious his actions look to others.
- Never leave power tools, hedge trimmers or lawnmowers unattended, even if you are only popping into the house.

2. COLD CALLERS

At the present time we have a number of traveller families staying in the area. A number of these families are going around selling new **POWER GENERATORS**.

Although these generators are seemingly legitimate, the sellers are using heavy-handed sales techniques and it is almost certain that these generators will not come with a receipt or guarantee.

Although they could be seen as a bargain at the time, they could be expensive in the long run. **Please think before engaging in business with any such salesman!!**

3. THEFT OF HEATING OIL

There has been an increase in the number of instances of theft of heating oil over recent weeks. **Please make sure that you put a good substantial lock on your tank and check regularly!**

Crime Prevention

At the Village Hall meeting in March the group was introduced to ‘*SmartWater*’ an exciting addition to the range of crime prevention techniques. The group expressed an interest and we felt it important to draw your attention to it for your individual consideration.

What is it?

- SmartWater is a chemical property marking liquid likened in concept to DNA.
- Each bottle is unique to the registered owner.
- It can be painted on to any property; dries clear and cannot be easily removed.
- It is invisible to the naked eye but glows yellow / green under UV light.

Why use SmartWater?

- All items of property either seized or found by Police will be checked for SmartWater. When present it will help to identify the rightful owner.
- It can assist in linking persons to a crime scene.
- It can act as a deterrent. Premises using SmartWater display signage and items of property marked exhibit a label advising that SmartWater is present - offenders do not like stealing property that can be easily identified.
- The SmartWater can also act as a psychological deterrent; detained persons will be told about SmartWater - we aim to transfer the fear of crime from the victim to the offender.
- Data shows that incidents of domestic burglary in some parts of the Country already using SmartWater, have been reduced by 88%
- The recommended retail price is £43.00. However as part of the Police Scheme we have negotiated a special one-off introductory price of **£20.00** inclusive of VAT and carriage.

In the next 10 days you will receive more information through your letterbox from a NW team member. If you are interested in finding out more about SmartWater then please visit the website or contact me at Arrow Lea.

Good Citizen Award 2008

Do you know someone aged 18 or under who has done something courageous, outstandingly generous or immensely community spirited in the last 12 months? If so show your appreciation and nominate them for a **GOOD CITIZEN AWARD**.

The Good Citizen Award Scheme is run by West Mercia Constabulary in association with local authorities. It aims to acknowledge and celebrate the achievements of young people in the community that might otherwise go unrecognised.

Continued on page 18

WHO'S WHO? - EARDISLAND 2008

<i>Organisation</i>	<i>Contact</i>	<i>Address</i>	<i>Telephone</i>
Bowling Club	Pat Roche	5 Green Elms	01544 388492
Chess Group	Peter Glenn	Bridgend, Eardisland	01544 388364
Church: Vicar	Nigella Tyson	The Rectory, Kingsland, Leominster, HR6 9QW	01568 708255
Church Wardens	Serena Askew	The Granary	01544 388637
	Jim Collins	Hardwick House	01544 388308
Deputy Warden	Dian Cope	Downome	01544 388317
PCC Secretary	Lotty James	Glan Arrow	01544 388207
Cricket Club	Claire Price	Lime Cottage	01544 388309
Eardisland Community Millennium Fund	Barry Freeman	Holmlea, Church Lane	01544 388226
Eardisland Dovecote Trust	Barry Freeman	Holmlea, Church Lane	01544 388226
Eardisland Twinning Association	Ruth Brinton- Bivand	Arrow Bank	01544 388375
Eardisland Village Band	Ruth Brinton- Bivand	Arrow Bank Eardisland	01544 388375
Herefordshire County Council	John Goodwin	Delfryn, Eardisley	01544 327086 01544 327112
Eardisland H&HS	Chris Wolland	12 St Mary's Walk	01544 388981
Herefordshire Times Correspondent	Diane Wolland	12 St Mary's Walk	01544 388981
Neighbourhood Watch Co-ordinator	Keith Mitchell	Arrow Lea, Eardisland	01544 388605
The Team	Mike Coleburn	Jubilee Cottage, Upper Hardwick	01544 388486
	Gerry Corfield	Broom Lane	01544 388575
	Barry Freeman	Holmlea, Church Lane	01544 388226
	John Holding	Old Pearmain, Burton Lane	01544 388176
	John Hope	Lower Hardwick Farm, Lower Hardwick	01544 388504
	Brian Pollard	Stephen's Cottage, Church Lane	01544 388915
	Graham Simpson	Lyme Lane	01544 388641
	Ben Woodcock	2 Orchard Cottages	01544 388976

Parish Council Chair	Serena Askew	The Granary Eardisland	01544 388637 serena.askew@btconnect.com
Clerk	Andrea Armour	20 Oaker View, Leominster HR6 8SG	01568 613729 andrea@andreaarmour.wanadoo.co.uk
Parish Magazine	Chris Bivand	Arrow Bank	01544 388375
Advertsing	James Cannell	Stanhope, Dilwyn	01544 388374 cannell1180@btinternet.com
Police	PC Sharon Wilson	Kington Police Station	07970 602344
Community Support Officer	Donna Jones	Kington Police Station	07970 602340
Village Hall	Jill Richards	The Bungalow	01544 388323
Whittington Trust	Peter Davenport	Hinton Manor	01544 388234
W.I.	Mavis Tantrum	Black Barns	01544-387972

Please let the Editor know if there are errors or omissions.



*Arrow Bank
Bed and Breakfast*

*Eardisland,
Leominster
HR6 9BT*

01544 - 388375

*chrisbivand@bivand.freeserve.co.uk
www.arrowbankbandb.co.uk*

*Quality accommodation
in en-suite rooms at
reasonable prices*

Previous good citizen achievements have included outstanding fund-raising activities, courageous acts and exemplary unselfishness in their attitude towards others. They may have helped family, or friends or other members of the wider community as a result of their own initiative or an organised activity. The action for which they are being nominated should have occurred between 27th May 2007 and 25th May 2008.

To nominate someone in the parish you need to complete a Nomination Form, which you can get by clicking onto www.westmercia.police.uk and then clicking onto the Good Citizen Award picture. Alternatively you can contact CSO Donna Jones who will be able to get a copy for you.

Footnote

If there is anything you would like to raise with the team then please contact us. Our next NW team meeting is scheduled for 22 May.

Keith Mitchell
Neighbourhood Watch Co-ordinator

EARDISLAND W.I.

Eardisland W.I. held a meeting with a difference on the 14th April, when members tried their hands at different crafts. Mavis Tantrum showed how to make greetings cards using spirelli and then how to make small, decorative boxes without the use of glue! While this was going on at one end of the table members at the other end were enjoying themselves making cards using rubber stamps and brush-tipped pens. It was a very sociable evening with everyone gathered together round the table and chattering away as they worked. It was voted a huge success and we are now trying to fit another, similar evening into our programme.

New members are always very welcome. Please contact Edna Pollard.

EARDISLAND BOWLS CLUB

With the weather as it is at the time of writing you would hardly think that the outdoor bowls season has already started. Eardisland Bowls Club has already completed three matches, with mixed results and the Tuesday League is well under way. On a positive note membership is well up on previous seasons with members living in Eardisland increasing from three to a healthy eight. If the club is to improve its facilities a strong membership is vital in applying for grants, so if you think you're up to rolling a wood down a manicured green

towards a little white ball (the jack), then enjoying a chat over a pint in the clubhouse why not give it a go? We meet every Tuesday evening at 6.30 prompt, although as a member you can play at any other time that suits and there is no pressure to play in competitive matches.

For more details contact either Phil Milchard on 388097 or Pat Roche on 388492.

ORCHARDS AND HOP FIELDS IN EARDISLAND

In 2006 the Eardisland History and Heritage Society was formed. Many new projects were suggested for research, among them the comparative study of the use of land for orchards, hops, woodland & coppice, as marked on the Tithe map of 1842/44 and the number of fields devoted to these crops in 2007/08. There was also the aim of understanding more about the way the landscape had changed over time. The Tithe map was the first major survey of land use since 1086. It also recorded ownership and field names throughout most counties of England.

It was decided to ask a local expert in landscape archaeology, Rebecca Roseff to give talks to the group and lead a walk through the parish to comment on the hedgrows and field boundaries and indicate how the group members could usefully undertake their own analysis. One of the visits subsequently made was to Arrow Mill, outlined in the last edition of this magazine.

Following her input, information was gathered and collated. It is believed that this is the first such attempt to make a comparative record in this parish of aspects of changing land use. When the project was first envisaged and work started, the map being used was that which was produced for the Women's Institute Study 1956. This was part of a nationwide project undertaken by the members to investigate the history of their own parishes. The map they produced was a hand drawn copy of the 1842/44 Tithe map. The draftsman at that time had marked the orchards either by name or with tree symbols. This was thought to be a convenient source for the history group members now undertaking a comparative study. There were approximately 112 orchards marked and about 50 hop fields. These were the initial targets for the project.

Sites and Monuments Record

However, once underway, further research enabled us to download from the Hereford Archaeological Service Sites and Monuments Record (SMR) the full list of orchards which appeared on the Tithe map (with apportionments, the field numbers and names of the owners of the fields). This produced a total of 249 orchard fields, which meant that a more comprehensive survey became possible, but naturally this added to the complexity of the study. However about 70 of these were in a part of the parish which has subsequently been absorbed into Weobley and so they were not checked.

The SMR also revealed a total of 63 hop fields listed on the 1842 Tithe Map, of which 7 were in the detached part of the parish, there are none to be found in 2008. It is apparent therefore that during the latter part of the 19th and in the early 20th century apples and hops were a valuable crop since there was a high demand for them among local breweries and cider manufacturers as well as for domestic use. It appears, from the listings in the Directories consulted, that there was a major decline in hop growing after the First World War. There are few mentions of hop growers after 1922 in Eardisland and it may be that the fall in production in this parish dates from about this time. It is thought that the kilns in the parish went out of use in this period.

Evidence for the importance of orchards and hops

The production of cider continued on a cottage industry basis since farmers produced it for the family use and that of their work force. This is evidenced by the number of farms in Eardisland that either had a large cider mill in their grounds (eg: Lynch Court, Arrow Lawn; Lower Burton Farm) which was driven by a horse or pony and the large number of properties that had smaller grinding stones now seen as garden ornaments. One feature to emerge is that it is difficult to ascertain the varieties of fruit in orchards since careful records do not seem to have been kept.

The fact that hops were an important part of the economy locally at one time is evidenced by the hop kilns at The Court House; there was another kiln in Hinton Manor and there is still one to be seen (now serving as a garage) at The Lynch. It is likely that local breweries in Leominster and Hereford made use of the hops produced. There are also kilns in Bidney farm (just outside the parish), at Perry Ditch Farm (also a few metres outside the parish boundary.) and there is one at The Firs, (near The Bar) which is just inside Dilwyn parish.

The subsequent decline

It is thought that the decline in hop growing was due to a number of factors. Today, hopfields are increasingly operated by specialist farmers since the methods of growing and harvesting require specialist equipment and costly machinery. The fields used in the past were invariably large and could easily be used more profitably for growing arable crops. Economic factors have changed, demand has diminished with the impact of changes in tastes. European and New World producers have developed beers and lagers to meet these tastes and obtain their ingredients from elsewhere.

The results of the comparative study of the numbers of orchards in 1842 and the number now in existence are being analysed, but it seems likely that there will be fewer than 50 remaining. However, there are some new orchards which are on a much larger scale than in the past, presumably related to the impetus of major cider manufacturers.

Contemporary investigations into orchards

It is believed that there are still more orchards in Herefordshire than in any other county in Britain. There is at present a Herefordshire Communities Evaluation Project underway which is investigating the impact of six orchards of different types, sites and management in the county and they will use the information to assess the value of orchards to farmers and the community.

There is a group known as The Marcher Apple Network founded in 1993 which does excellent work in helping to revive old varieties of apples and pears. MAN now is involved in many different activities from keeping their own orchards, which preserve old varieties, to attendance at many local shows during the autumn where the identification service proves very popular. The Network Coordinator is Mrs Sheila Leitch (01497 847354). They will also advise on old varieties suitable for different situations and orchard maintenance.

The outcome of our study, which we believe is the first to make such an investigation in our parish, is being written up at present. We are grateful to all those who have given information and those who have assisted in the gathering of data which will be made available in due course.

Paul Selfe

EARDISLAND HISTORY AND HERITAGE SOCIETY (EH&HS)

The Society is planning its activities for the coming year. At Burton Court our previous archaeological work has been surveyed by D.N. (Dai) Williams of Herefordshire Archaeology who has recommended the reopening of two

trenches and the extension of one, and this will provide plenty of interesting work for the season.

We are revisiting some of the work carried out by our predecessor, the Oral History Society and the trusty tape recorder is being brought back into use to interview previous residents of Eardisland who have memories of people and places.

We carry out research into the history of Eardisland from prehistoric times to the 20th. Century and occasionally discover aspects of that history which have become lost through the passage of time, since not only are they outside the span of living memory (even that of our parents or grandparents) but are also unlikely to be recorded in documents held locally. The following extract is an example.

Was there a cattle drovers' route through Eardisland?

The short answer is yes there was, and the evidence suggests that it may have been one of the most important in the country.

Welsh black cattle played an important part in the economy of England and Wales well before the beginning of the nineteenth century, but written records are very limited before then.

The cattle were driven from the uplands of mid-Wales and the drovers followed several routes through to the midlands and south-east where they were pastured before being sold on and sometimes exported to Europe. One of the major routes began at Abergwesyn in the hills north of Llandovery, and passed through Builth Wells, Kington, Pembridge, Eardisland, Leominster, and on through Bromyard and Worcester into the midlands and even as far as Essex.

One of the most important names in cattle droving in the early nineteenth century was David Jonathan, a cattle dealer from Dihewyd near Lampeter in Cardiganshire. Substantial written records from his business survive and are located in the National Library of Wales. These records contain some references to Eardisland.

The drovers who worked for Jonathan kept accounts of expenditure to be settled on their return. The dealer or master drover would ride ahead of the drove and arrange for overnight accommodation at a local inn for the drovers and forage for the cattle.

The drove would cover between fifteen and twenty miles a day. Costs were about 4d to 6d. a night for the drovers and the cost of hay for the cattle would have varied according to the season.

An account of October 15th 1840 shows overnight costs averaging just over 1s. 0d. on the journey from Abergwesyn, but at Eardisland the sum is 5s.

Od. This may suggest a longer stay. Perhaps the drove was held up by floods! The impact of a herd of some three to five hundred cattle arriving in a small village for a stay of at least one night must have been considerable. No doubt local farmers would have driven a hard bargain for the fodder they supplied. The era of long-distance cattle droving ended within twenty years of this particular piece of evidence, with the extension of the railways, particularly the line to Shrewsbury.

Source: Richard Moore-Colyer: Welsh Cattle Drovers; Landmark Collector's Library 2006

The History and Heritage Society is open to all who are interested in joining us and we meet on the third Monday of every month in the Cross Inn at 7.30pm. For information about the Society, please ring 01544 388981.

Chris Wolland
Chairman

WEATHER REPORT



Once again there has not been any dramatic event to report weatherwise. The rainfall has continued its wet theme. March had 88.7mm (3½”) and April 67.9mm (2¾” approx.) Although both are above the expected average neither was exceptional and there was no threat of flooding. Both March and April had some very frosty nights but both had warm

sunny days as well.

Peter Glenn

FROM THE RECORDS

The Eardisland Parish Magazine (then Parish News) has always published little pieces of history. I take this from the May edition ten years’ ago – May 1998. It refers to a meeting held in 1872 (it does not say what kind of meeting – Council?):

Continued on page 30 >>>

HVA

Age Concern

Leominster museum

STUART HURDS

Oil Fired Heating Engineer & Plumbing

Commissioning, Servicing & Repairs Installations
Aga -Rayburn - Stoves & Central Heating Boilers



Tel: 01544 318809

Mobile: 07773010444

C A Marsden

Traditional and Modern Upholstery

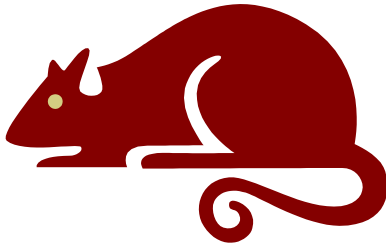
Upholstery : Loose Covers : Chair Caning

Repairs and Refurbishment : Upholstery Supplies

Tel: 01544 388868 Mob: 07989 692472

Email: cmarsden@freeuk.com

Feet



H.W.S.

PEST CONTROL

***WASPS *BEES *HORNETS *ANTS
*RATS *MICE *FLIES *FLEES
*MOLES *SQUIRRELS**

**Farm contracts and private work
undertaken**

**1st CLASS SERVICE AT UNBEATABLE
RATES!**

**Call Darren 24/7 on : 01544 231509
Mob: 07778 033862**

“New School House

A meeting was held on Feb 22nd 1872 to consider ways of raising the sum required for the building of the schoolmasters house on the site of the existing house. The sum required was £207. It was recommended that subscriptions be obtained. The meeting was attended by Geo. Yeld; W. Turner; John Morgan; Thomas Bassett; John Pinches; Richard Roberts; John Clowes; John Hall and Rev Barker.”

What a wonderful piece of social history this is! I assume that the current ‘School House’ is this very building, although I don’t know the actual date of construction. Leaving aside the matters of masculine for, what we now call, ‘Head Teacher’, and no apostrophe, £207 was a lot of money in those days. I wonder who the ‘subscribers’ might have been.

Mr Yeld (Geo.) lived here at Arrow Bank (then called Arrow Villa, I believe). John Clowes was at Burton Court, I suppose.

CONTACT THE EDITOR

Please forward your magazine copy, in any form, to:

Chris Bivand, Arrow Bank, Eardisland, Leominster, HR6 9BT

☎: 01544 – 388375 (answer phone available)

e - mail: chrisbivand@bivand.freeserve.co.uk

ADVERTISING MANAGER

James Cannell, Stanhope, Dilwyn, HR4 8JH

☎: 01544 – 388374

e - mail: cannell180@btinternet.com

This edition of the Eardisland Parish Magazine was printed by
Oldlands Press courtesy of Andrew Rixon

The copy date for the next edition of the Eardisland Parish Magazine is:

FRIDAY, 4th JULY 2008

Published by Eardisland Parish Council. Views expressed are those of individual contributors and not necessarily those of Eardisland Parish Council.

Sunday 22nd June – 5th after Trinity		
8.00 am	Holy Eucharist BCP	Kingsland
9.30 am	Holy Eucharist CW	Eardisland
11.00 am	Sung Eucharist CW	Kingsland
11.00 am	Matins BCP	Aymestrey
Sunday 29th June – Peter the Apostle		
9.30 am	Benefice Eucharist CW	Eardisland
Sunday 6th July – 7th after Trinity		
9.30 am	Holy Eucharist CW	Eardisland
11.00 am	Choral Matins BCP	Kingsland
11.00 am	Holy Eucharist BCP	Aymestrey
6.30 pm	Holy Eucharist BCP	Kingsland
Sunday 13th July – 8th after Trinity		
8.00 am	Holy Eucharist BCP	Kingsland
11.00 am	Benefice Sung Eucharist CW Albert Attwood to be made Reader Emeritus; Preacher – The Revd Prebendary Andrew Talbot- Ponsonby, Warden of Readers	Kingsland
Sunday 20th July – 9th after Trinity		
9.30 am	Holy Eucharist BCP	Eardisland
11.00 am	Sung Eucharist BCP	Kingsland
3.30 pm	Holy Eucharist	Aymestrey (<i>LE closed</i>)
6.30 pm	Choral Evensong BCP	Kingsland

**And at 10.00am each Thursday unless otherwise stated:
said Holy Eucharist BCP at Kingsland**

EARDISLAND FLOWER FESTIVAL

24th, 25th & 26th MAY, 2008

FRIDAY 23rd MAY

**Preview & Floral Demonstration
Church 6.30pm**

Village Hall 7.30 pm

**Floral Demonstration by
Elizabeth Matheson**

"THE PLEASURE IS MINE"

Wine and nibbles, raffle

Tickets £7.00

Available from:

**Eardisland Tea Rooms
01544 388226**

**Esther Simpson
01544 388641**