

THE EARDISLAND PARISH MAGAZINE

JANUARY 2009

ISSUE 111



Arrow Lawn Barn, Eardisland

CHURCH SERVICES THROUGHOUT THE BENEFICE

Sunday 1 February - Candlemas		
9.30 am	Holy Eucharist CW	Eardisland
9.30 am	Parents and Children Service	Kingsland
11.00 am	Choral Matins BCP	Kingsland
11.00 am	Holy Eucharist BCP	Aymestrey
6.30 pm	Holy Eucharist BCP with prayers for those who fell at the Battle of Mortimer's Cross, 1461	Kingsland
Sunday 8 February – 3rd Sunday before Lent		
8.00 am	Holy Eucharist BCP	Kingsland
9.30 am	Matins BCP	Eardisland
9.30 am	Holy Eucharist CW	Aymestrey
11.00 am	Sung Eucharist CW	Kingsland
Sunday 15 February – 2nd Sunday before Lent		
9.30 am	Holy Eucharist BCP	Eardisland
11.00 am	Sung Eucharist BCP	Kingsland
3.30 pm	Holy Eucharist <i>Please check venue</i>	Leinthall Earles or Aymestrey
6.30 pm	Choral Evensong BCP	Kingsland
Sunday 22 February – Sunday next before Lent		
8.00 am	Holy Eucharist BCP	Kingsland
9.30 am	Holy Eucharist CW	Eardisland
11.00 am	Sung Eucharist CW	Kingsland
Wednesday 25 February – Ash Wednesday		
7.30 pm	Sung Eucharist and Imposition of Ashes	Kingsland
Sunday 1 March – 1st Sunday of Lent		
9.30 am	Holy Eucharist CW	Eardisland
9.30 am	Parents and Children Service	Kingsland
11.00 am	Choral Matins BCP	Kingsland
11.00 am	Holy Eucharist BCP	Aymestrey
6.30 pm	Holy Eucharist BCP	Kingsland

In this issue:

Church Services	2 + 39	Happy Birthday!	18
Index	3	Who's Who?	20
Editorial	3	Burns' Night	22
Dates	4	ECMF	23
Annual Review	5	Dovecote Trust	24
New Year's Eve	8	IBPC	26
Bits and Pieces	9	Delhi	26
Nigella's Letter	12	EH & HS	28
Bishop's Bit	13	Heating Oil	31
Hospice	14	Computer Warning!	32
Medieval Feast	15	Church Appeal	33
Parish Council	15	Weather	35
Neighbourhood Watch	15	Contacts	38

EDITORIAL

With this edition you should also receive a questionnaire, accompanying notes and a stamped addressed envelope relating to the Eardisland Parish Survey. This is an important development for the village and will inform decisions about future actions, grants and funding. Please read the notes carefully and complete the questionnaire as requested. I know that I tend to put these sorts of things on the 'to do' pile, and they stay there for ages. In this case, the analysis of the responses will begin at the beginning of March so I urge you to spend a few minutes now to help with the future of the village. (No questionnaire? Please contact Barry Freeman 388226)

Just after I completed the last magazine my computer had a serious fit of quite disgraceful

behaviour which resulted in many problems for me. I have written about this (page 32), and if you are a computer user, it might be worth your while reading about my difficulties – it's particularly important if you have anything on your computer that you can't afford to lose. The loss of the hard drive also explains why this edition of the magazine has taken longer than normal, for which apologies.

Finally, I have left out the village calendar this time as I have very few dates to publish. If you are organising anything that should be recorded, please write the date, time and venue on a separate piece of paper, or e-mail or whatever is most convenient and let me have the details as soon as you can. Many thanks.

Chris Bivand

EARDISLAND PARISH MAGAZINE DATES, 2009

Copy Date	Projected distribution date
Friday 6 th March	Friday 27 th March
Friday 1 st May	Friday 22 nd May
Friday 3 rd July	Friday 24 th July
Friday 4 th September	Friday 25 th September
Friday 13 th November	Friday 4 th December

Please note that the actual delivery dates depend upon a number of factors, including the time to prepare copy, the printer's commitments and the distributors' time. If you want to put material in the magazine, please think ahead and add another week to the right-hand column to allow a safety margin.

PARISH COUNCIL MEETING DATES, 2009

Thursday 26 th February	Meetings are the Village Hall (small room) and start at 7.30pm.
Thursday 26 th March	
Thursday 30 th April	
Wednesday 13 th May	Annual Parish Council / Annual Parish meeting. The venue will be notified in due course.
Thursday 25 th June	
Thursday 13 th August	
Thursday 24 th September	
Thursday 29 th October	
Thursday 26 th November	(Subject to confirmation)

PCC MEETINGS 2009

21 April	Annual General Meeting of PCC of St Mary's Church to which all parishioners are welcome
16 th June	PCC meeting
15 September	ditto
17 November	ditto
12 January 2010	ditto

13 & 14 June 2009

Open Gardens Weekend

THE ANNUAL REVIEW

Time once more to invoke Janus, most ancient of the Roman gods, taking a last look back at the fast darkening room that was 2008, and ahead along the road where the sun is rising on 2009.

What we did in 2008

12 th February	Soup Lunch	St Michael's Hospice
16 th February	Valentine's Dinner	Twinning Association
5 th April	Big Breakfast	Church Appeal
24 th /26 th May	Flower Festival	Church Appeal
21 st /22 nd June	Open Gardens	Church/Village Hall
24 th July	Fun Day	Church Appeal
16 th August	Teddy Bears' Picnic	Church Appeal
18 th August	Black. Barns Open Gardens	Church
24 th August	Duck Races	Village Hall
13 th September	Village Show	Show Funds
16 th September	Coffee Morning	St. Michael's Hospice
26 th September	Pudding Evening	Church Appeal
3 rd October	Harvest Festival/Supper	Tanzania Appeal
18 th October	Apple Supper	Twinning Association
8 th November	Christmas Bazaar	Church Appeal
21 st November	Dinner and Auction	Church Appeal
6 th December	W.I. Coffee Morning	Church Appeal
6 th December	Christmas Dinner	Village Hall
21 st December	Carol Service	Church Housing Trust
31 st December	New Year's Eve Dinner	Megan Baker House

On-going activities

Regular series of fixtures, social and fundraising events by bowls, cricket, darts, pool and quoits teams plus charity events at the Cross Inn and White Swan.

The Special Interest Groups

The Art Group, History and Heritage Society, Twinning Association and Village Band are continually active with enthusiastic memberships, always ready to welcome new members who share their interests. In June the Twinning Association arranged a visit of 28 people to La Vieille Lyre in

Normandy and we now have signs at the main village entry points proclaiming our twinning. We also continued our annual run of successes with Heart of England in Bloom with a silver award.

Parish Organisations

The Parish Council, Parochial Church Council, Village Hall Management Committee and Trust, Dovecote Trust, Millennium Fund, Whittington Educational Trust and Neighbourhood Watch all continue with their multitude of appointed duties.

The Eardisland Parish Magazine continues to be a model for local journalism with highly competent editorship and free delivery by volunteers to all households in the parish. The weekly column in the Hereford Times is frequently the largest in the County Times and provides the perfect news and information complement to the two-monthly magazine. The editorial payments for the column are all donated to our local hospice support group. This year saw ownership, and thus financial responsibility, for the magazine transferred from the PCC to the Parish Council. That we are able to receive such a high quality substantial (approx. 250 pages per annum) magazine is due to the extremely favourable terms provided by a local printer.

The Church Appeal

In 2008 we joined the ranks of parishes and dioceses throughout the country that are having to raise large sums of money to keep their churches in adequate repair for future generations. Progress is being regularly reported in the magazine, as with all the events and activities recorded above.

Our Friends and Neighbours

As in every year, our community has had its share of joy and sorrow. There have been weddings, christenings and funerals in the church and people have moved away from the parish and new residents arrived. Again, these occasions have been reported through the year and we do not forget those who are no longer with us. That was 2008.

It was a year which saw 20 public events and a wide variety of activities, all due to the determination and ingenuity of dedicated volunteers. Together they ensure that Eardisland is a living community rather than a sedate dormitory.

This review differs from those produced for several previous years in that it does not list names of people principally associated with all the events and activities listed. This is because there are so many who contribute and each event is recorded in the magazine. Inevitably, even with the most painstaking research, names are inadvertently omitted. Having said there are

so many, please take the time to read the item on volunteers which follows this review.

A Brief Look Ahead to 2009

A copy of the Welcome to Eardisland leaflet for 2009 is enclosed with this magazine, giving dates for the main events. The magazine will as always provide details of the programmes and events of all the local organisations as they become available and the Church Appeal will continue to build on the excellent foundation established in 2008.

Three initiatives are being carried forward from the public meeting in July: the installation of parish website; the compilation of a parish plan and a feasibility study into the likely viability of a community shop. One thing is certain: Eardisland will not stand still in 2009!

VOLUNTEERS ARE THE KEY TO OUR COMMUNITY LIFE

Some Points to Ponder

- Eardisland Parish is home to about 450 adults (i.e. over 18), with a considerably higher than average percentage of the older age groups.
- This population is equivalent to about SIX STREETS IN A TOWN.
- This population has responsibility for three important public buildings: the Church (grade 2* listed), the village hall and the Dovecote (also grade 2* listed).
- It also has responsibility for a general village environment which is an integral part of the national heritage; a village that is admired and treasured by visitors from, literally, all over the world each year.
- ONLY A CONTINUOUS INFLOW OF REVENUE FROM OUTSIDE THE PARISH CAN GUARANTEE THE FUTURE OF THIS HERITAGE.

Some Additional Volunteers are Needed.

The impressive list of events in the Review of 2008 conceals the fact that the organizers had in some cases considerable difficulty in assembling sufficient volunteers to cover the necessary duties. This was particularly the case with *Open Gardens* weekend, where personnel are needed for car parking, ticket selling and catering, for two consecutive days. It has been an event which brought considerable outside revenue into the village.

The Village Fun Day can also use extra people: it really took off in 2008, its second year, and this year the proceeds will be shared between breast cancer charity and the Millennium Fund for use in supporting further local events and organisations.

If you would like to register your interest in helping with any (or all!) of this year's events, the following organisers are the primary points of contact for further information. They will be delighted to talk to you.

Open Gardens Weekend	13/14 th June	Serena Askew	388637
Village Fun Day	11 th July	Margaret Milchard	388097
Annual Duck Races	30 th August	Jill Richards	388323
Hospice Local Events	Dorothy Brown 388389	Beryl Hoda 388131	
Eardisland in Bloom	Derek Wareham		388628

Please consider helping; there are many ways to do so. Events are made by people and events make money.

Barry Freeman

THE NEW YEAR'S EVE VARIETY PARTY
in aid of Megan Baker House

A Review and Appreciation by Barry Freeman

This was the New Year's Party to be at. All of us who were fortunate to be in the Village Hall to welcome 2009 were treated to a master class in how to have a grand evening and raise a significant sum for a very worthwhile cause.

The enjoyment started the moment we entered the hall, which had been transformed into Santa's Grotto and Aladdin's Cave rolled into one, with wonderful decorations, auction items and draw prizes filling every available window sill and corner, and magnificently laid tables.

The whole evening programme rolled along and certainly lived up to its billing as a variety party. The hot-pot supper and home made apple pies were a delicious reminder of what real English cooking tastes like, the perfect antidote to the pseudo-cuisine promulgated by "celebrity chefs" in recent years.

We were then treated to a non-stop sequence of psychological magic, singalongs, raffles, auction lots, games and quizzes all expertly orchestrated by an impeccably attired trio of Lancashire's finest male voices, surely prime

contenders to break the east European grip on the forthcoming Eurovision Song Contest.

The whole evening had a strong Lancastrian flavour. The driving forces were David and Sue Wallis, along with Audrey Beckett, and it was a measure of the esteem and affection in which they continue to be held by the family and friends they left behind in Lancashire that our friends from the north arrived in force to support them. Lancashire people are of course famed for their goodwill, capacity for hard work and sense of humour; all these qualities were much in evidence to create such a memorable occasion.

Locally, too, many people contributed with donations for the auction, the grand draw and food items: it is appropriate to mention particularly Margaret and Phil Milchard, and Val and Alan Holloway who were the core planners through the months this event took to organise.

One final note of appreciation: the evening ended with the trio and pianist leading the singing of the National Anthem a far too rare occurrence nowadays.

**AND THE BOTTOM LINE? OVER £1,500 WILL BE DONATED TO
MEGAN BAKER HOUSE. WHAT A FINE END TO THE YEAR'S
EVENTS**

BITS AND PIECES

BRITISH LEGION

Thank you so much to everyone in the Parish who very kindly contributed to the Royal British Legion Poppy Appeal 2008, and my grateful thanks also to the collectors. The sum total of the house to house collection and St Mary's Church collection on Remembrance Sunday came to **£692.34p**, which was a superb effort and the community's generosity will help towards assisting servicemen/women both young and old, who are in need.

Rita Kirby

W.I.

Eardisland W.I. wish to thank all members & supporters of their Christmas Sale & Cofffee Morning which was held in the Village Hall on Sat 6th December. Due to your generosity we have been able to donate the sum of £300 to the St.Mary's Church Appeal.

We meet on the second Monday of each month at 7.30pm in the village hall. January 12th was a renowned success as after the business meeting Mavis,

Doug, Dave & Geraldine demonstrated and taught some Line Dances. Most members got up and had a go at it so this made it a most enjoyable evening.

On February 9th our speaker is Simon Lichtenstein the Osteopath (probably a good idea after that Line Dancing!). If anyone is interested in coming along give Mavis Tantrum a call on 01544 387972.

On behalf of all our members we welcome Ruth Miller as our Treasurer and also take this opportunity of wishing readers a prosperous New Year.

Mavis Tantrum (Secretary)

FLOWER ARRANGING CLASSES

'With Easter in Mind'

Classes begin on Tuesday 3rd March 2009 for 5 weeks, in the Village Hall, Eardisland. 10 – 12 noon. All abilities welcome, come along and enjoy learning a new skill. Please contact Esther Simpson ☎ 01544 388641.

CAROL SINGING

On the Monday before Christmas, 22nd December 2008, the carol singers, led by the choir of St Mary's Church, went round the village and collected just over £115. This sum will be sent to the Children's Society to help children in need.

A big thank you to all those who came and sang, to the householders who welcomed us, or who joined in or requested particular carols, and donated so generously, and at the end of the evening to Alister Hoda for the gluhwein and hot sausage rolls, which were greatly appreciated.

If anyone is interested in joining the choir either for regular services or for special events they are always looking for new talent. If you are interested please contact Annette Blyth or any member of the choir.

Serena Askew

(01544 388637 or serena.askew@btconnect.com)

RIDE AND STRIDE: SEPTEMBER

On September 13th David Cope once again set off on his bicycle and visited 10 churches here and in the surrounding parishes. He managed to complete the sponsored ride this year and raised £222. The money was divided between the Historic Churches Trust and St Mary's Church appeal, here in Eardisland. David would like to thank all those who sponsored him.

CHILDREN'S "IN BETWEEN" PARTY (BETWEEN HALLOWEEN AND CHRISTMAS!): NOVEMBER

Once again the Village Hall was visited by a wonderful gathering of Fairies, Princesses, Skeletons, Vampires, Little-Devils, Pumpkins and Pirates with Mums and Dads.

Several games were played and enjoyed then during supper a surprise visit from Jemima Parry-Jones who was escorted by Mozart – her Eagle Owl. I don't know who was more surprised – the children or Mozart! Mozart the consummate performer demonstrated his wingspan and how he could almost turn his head through 360 degrees. Jemima talked to the children who were keen to know what Mozart ate, how old he was and other interesting questions that only small children would think to ask!

After eating their fill the children used up some energy dancing to "Ghost Busters" and generally having a good time making themselves dizzy.

Thank you to all the children and families who attended and a special thank you to the team of helpers. I think we all had as much fun as the children. See you all again next year!

COFFEE MORNING TABLE AT THE FORBURY IN LEOMINSTER: NOVEMBER

On the 21st of November it was the turn of Eardisland Parish to run a stall at the popular Friday Coffee Morning at the Forbury in Church Street, Leominster. Beryl Hoda and Dian Cope ran the table of Bric-a-Brac and cakes (there are never enough cakes!). A total of £78 was raised which was donated to the church appeal.

Thanks to all cake-makers and suppliers of bric-a-brac.

NEW SERVICE FOR HOME BASED BUSINESSES

Herefordshire Council is looking for people who run their businesses from home. Council officer Andy Dawson can help with advice and guidance to small businesses that work from back bedrooms, front living rooms or even on kitchen tables. How to apply for funding, who to talk to about your plans and where to get training plus networking opportunities are all possible through the new Home Business Network.

Contact Andy on 01432 383064 or adawson@herefordshire.gov.uk for more information.

NIGELLA'S LETTER

Dear parishioner



February is not everyone's favourite month and that is understandable with

cold dark days and Spring still a long way off. Never mind, we do at least have fuel, unlike those in the Ukraine and some other countries, and February is a short month. And we have a wonderful Christmas to look back on. The choir looked splendid & sang most beautifully at the Carol Service, and both the Midnight Mass and the Christmas morning services were well attended and very happy occasions. Thank you to all who made the church look so wonderful or who contributed in any way to making it all happen. We were lucky to have so many lovely candles still in place after that beautifully atmospheric wedding the week before.

Many of you will have heard that sadly the bid to English Heritage for a grant to finance some of our work on the church was unsuccessful. We will, of course, try again but there is very little money available and many churches in a much more serious condition than ours. However we

can still go ahead with that work which was not covered by the grant. Thanks to your generosity we ought to be able to begin by putting in new heating, although until we raise a little more money we may have to leave the redecoration of the inside of the church. The PCC will be taking advice from the Appeal Committee before making decisions on how to proceed. We will get there in the end; it will just take a little longer to do it!

We have had a sad event in the parish since I last wrote with the death of Doris Symonds. Our thoughts and prayers are with Jimmy and Michael and all the family.

Lent begins this year on Wednesday 25th February and there will be a School service at 9.30am and a Sung Eucharist with Ashing at 7.30pm, both at Kingsland but welcoming everyone. The Lent Course is called "Spot the Difference" this year and will take place on each of the five Mondays in March at 7.30pm. Watch posters or pew leaflets for the venues. It would be so good if we had a few more at these meetings as it is so valuable to hear different opinions and points of view. Do think about it!

Mothering Sunday is on March 22nd and at the 9.30am Family Service there will be flowers for everyone in any 'mothering' role and the chance to

thank God for our mothers and our Mother Church here in Eardisland.

I do hope you are keeping reasonably well in this changeable, but very definite, winter weather.

May God bless you all,
Nigella

LETTER FROM THE BISHOP OF HEREFORD

Carpe diem – Seize the moment – Kairos – a moment of time.

There are opportunities which may be taken or missed. They usually come quickly and we have the discernment to accept them and act or we miss the time and it is gone.

It was such a Kairos moment when Mary and Joseph took the baby Jesus into the temple and Simeon and Anna were there, who greeted them and recognised in that moment the Christ child. It was this occasion which gave us the wonderful words of the Nunc Dimittis, when Simeon took the baby Jesus in his arms and said “Lord now let your servant go in peace: your word has been fulfilled. My own eyes have seen the salvation: which you have prepared in the sight of every people; a light to reveal you to the nations: and the glory of your people Israel.” There was also the prophecy that Jesus would be rejected and that a sword would pierce Mary’s soul too. Simeon and Anna recognised Jesus in that

moment and seized it. They were able to do so because of a lifetime of worship, prayer and waiting. It was this that gave them the gift of discernment when Mary and Joseph came into the temple with Jesus.

This occasion has become what we know as Candlemas when the celebration of Jesus being born of Mary comes to an end and we begin to look forward to Lent, Holy Week and Easter. This is brought out powerfully for us in the liturgy of the day, when we light candles celebrating Christ’s birth as we look back over the last forty days, and then blowing them out, a poignant moment which points us to Jesus’ passion, death and resurrection. It is like a hinge moment in the Church’s year as we look back and look forward.

Such a time has also come to me personally because I have announced my intention to resign as Bishop and Archdeacon of

Ludlow. The 31st May will be my last Sunday and I shall not be able to accept any invitations after that date. I am most fortunate in being able to look back over 44 years of life as a Deacon, Priest and Bishop in this Diocese and now look forward to the future. I am most grateful to all the people who have given me so much in this Diocese with whom I have worked over many years. However it is a good moment to leave as I am so

involved with you all in the 2015 Consultation which enables us to look forward to a vibrant, thriving church carrying on God's mission in a fast changing world.

Please join with me in Dag Hammarskjöld's prayer, which I have said daily for many years.

“Father, for all that has been thanks, to all that shall be, yes.”

KINGSLAND AND EARDISLAND FRIENDS OF ST MICHAEL'S HOSPICE

The total raised by the group in 2008 was £4,524.55, bringing the total amount raised since 1992 to £51,692.67. This is a remarkable achievement for one and then, since 2003, for two villages to raise, so grateful thanks to all of you who support our events.

Speaking of which, we will be having another collection at Morrisons on Friday 19th June. This is a very good fund raiser so we are extending the collection time until 8.00pm. Beryl and I have agreed that Eardisland will be responsible for the period 5.00pm to 8.00pm, so we are looking for volunteers to help us over that time. If you think you could spare

an hour (or two) on this day, please contact one of us.

On Thursday 3rd September we will be holding our usual coffee morning at the Tea Rooms, thanks to the generosity of Kathleen and Barry. Then Kingsland will be having an open gardens weekend on 11th, 12th and 13th September with all the proceeds donated to the Hospice.

Finally Bridget Eastaugh will be hosting her pre-Christmas coffee Morning on Thursday 1st November at Willow Cottage. This is always an enjoyable event with lots of Christmas puddings and mince pies for sale - and there goes another year!

Beryl Hoda 01544 - 388131
Dorothy Brown 01544 - 388389

Medieval Feast

Saturday 14th March 2009

@

7.30 p.m.

A medieval evening of fine foods, medieval tarts and entertainment to be held on the 14th March 2009, in the newly refurbished 15th Century Hall at the home of Dr. and Mrs Hoda, Arrow Lawn, Eardisland, in aid of the on-going Church appeal.

During the evening there will be a medieval raffle with some really excellent prizes to be won. We would really like to make the evening a village success and urge you to book your tickets as soon as possible as numbers are limited.

The cost of a ticket is only £15.00, including the first glass of ale or cider. This will also include fun and music (and the odd ribald verse) together with medieval style food to eat by candle light in the warmth of a roaring log fire. What a lovely way to spend a winters evening, so please come and join us. Tickets are on sale from the end of January.

Contact: Beryl Hoda 388131 or Dian Cope 388317

EARDISLAND PARISH COUNCIL

Items discussed at the January meeting are covered in this edition of the magazine.

NEIGHBOURHOOD WATCH

Update on Neighbourhood Watch signs across the Parish

As reported in the last issue, one of the NW team, Ben Woodcock carried out a survey of the entire parish and presented the case to the October Parish Council meeting. In December Ben met with representatives of Herefordshire Council Highways to discuss the original proposal.

The Highways department have recommended that a NHW scheme needs to cover a specific neighbourhood and not a whole parish. As a result signs would need to be positioned at the entry points to an agreed neighbourhood as this would have greater impact. It was suggested that:

1. As far as the signage was concerned we should consider the parish as four 'separate areas' i.e. Eardisland Village; Upper and Lower Hardwick; Lower Burton; Broome Lane. Consequently signs would need to be positioned at the entry to 'each of the separate neighbourhoods'.
2. Most of the properties in each neighbourhood had 'signed up' to the scheme.
3. Any isolated property not covered by these areas could place a sign on their own gate or drive.

The NW team will be meeting in early February to discuss these suggestions and we would be delighted to receive your comments prior to that meeting.

PACT meetings - Your chance to have your say

The next round of PACT meetings are due in February and it's your chance to have your say on what's bothering you in your neighbourhood. PACT (Partners And Communities Together) is an opportunity for local communities to get together with local agencies such as West Mercia Constabulary and Herefordshire Council to discuss solutions to problems that local people are suffering. Issues often discussed might include anti-social behaviour, speeding, inconsiderate parking and litter. However you may have different matters that you wish to air, so why not go along to the next PACT meeting to share your concerns with your Local Policing Team. **The next meeting is at 7:00pm on 11th February at Lady Hawkins Leisure Centre in Kington though future meetings will be held at alternate rural locations.**

Seasonal Crime Trends

1. Theft of Power Tools

Over the past month a Honda petrol strimmer and EBKO hedge trimmer were stolen from car ports in the Pembridge area. Please ensure that all your power tools are locked away securely in a shed or garage, and consider SmartWater marking them for added security. SmartWater kits can be purchased from your Local Policing Team.

2. Bogus Callers

In recent weeks, police across the West Midlands region have seen an increase in distraction burglaries when callers posing as water board staff, TV engineers and the like, charm their way into the houses of the vulnerable. Having distracted the householder, their accomplices slip into the property unseen and remove cash and valuables. Whilst the number of these burglaries is low, common to many of them is the sighting of a silver Mk 5 Volkswagen Golf car.

Police believe the same car is being used but with different number plates on it each time. If you see a silver VW Golf with two or more men in it, parked near the house of someone who is elderly or vulnerable or if you see such a car in other suspicious circumstances, you are urged to contact the police on 0300 333 3000.

3. Vehicle Crime

(a) There are 72 recorded crimes in West Mercia where Land Rovers have been stolen this year. This accounts for 6.5% of all car theft, despite Land Rovers only constituting 1.5% of cars on the road. The majority of these crimes involved Land Rover Defenders pre-2002, and during this period, the level of theft has come down from a peak in January to a low in May, but it is now starting to rise again!!

(b) A couple of calls have come in around the rural area of three males in a small white van asking for scrap. The vehicle registration number is thought to be similar to VU5* *PP. If seen in your area please call your local police.

Ringmaster

West Mercia has placed an order for a computerised Ringmaster system to be purchased using funds provided by a successful bid to the National Lottery. Although the order will take a few weeks for processing and preparation it should be in position to go functional by the middle of February 2009. Ringmaster will then allow NW team members to be contacted direct with urgent bulletins and updates, details of which can then be forwarded to the community. More details of the system will be included in the next magazine issue.

West Mercia Police Pledge

The New Year is a time of starting anew, of resolutions and of promises. For 2009, West Mercia Constabulary intends to do just that with its Policing Pledge. The national Policing Pledge came into being on 1st January and

covers a wide range of policing activities which all forces will be required to meet. The aim is to deliver an even better service to the communities that they serve.

Amongst a number of elements the Pledge promises to supply information on Local Policing Teams, PACT meetings and surgeries as well as monthly crime maps and a range of performance and criminal justice information, together with details of partnership work. The Pledge also details minimum response times to calls and messages to the Call Management Centre and to local Policing Teams.

West Mercia Constabulary also pledges to treat people fairly, with dignity and respect and to ensure fair access to its services when it is reasonable and suitable for members of each community. They have also pledged to keep victims of crime informed of case progress at intervals to suit individuals. Further and more detailed information on the Policing Pledge will be available shortly from the front counters of police stations across the force, at local PACT meetings and on the website.

Keith Mitchell (Neighbourhood Watch Co-ordinator)

HAPPY BIRTHDAY FROM ENGLAND'S CAMPANOLOGISTS

Leslie Evans celebrated his 96th birthday on 7th December 2008. Bell ringers



from far and wide marked the occasion with a number of unique tributes to Leslie, acknowledged as one of the country's leading ringers and practical expert on bell maintenance and conservation.

In London on 11th November over 50 members of The Ancient Society of College Youths signed a specially inscribed card at a meeting of the society, which can trace its origins back to the medieval guilds of the City. The Society selects its members by invitation and rings regularly at St Paul's and Westminster Abbey.

Two weeks later, at South Croydon St.Peter's on 27th November, leading members of the Surrey Association of Bell ringers rang the 100th Twelve-Bell Peal at the church. This was a peal of 5,096 Stedman Cinques

(pronounced "sinks" as in the Ports), specially composed and conducted by Thomas F. Lawrance to end with 96 changes in honour of Leslie's birthday.

This peal took 3 hours 20 minutes and the tenor bell, which weights 30 cwt., was rung by Michael P. Moreton who is now in his mid-seventies: some achievement to rotate the equivalent of 30 sacks of potatoes for almost three and a half hours! (Please see footnote).

Finally, at Eardisland on 7th December, eight invited ringers from Herefordshire and beyond rang 1260 changes of Grandsire Triples conducted by Andrew Mainwaring, who was brought up at Welcote and learned to ring in Eardisland church. The ringers and other friends of Leslie then travelled to Leominster to take a cake and join in having tea with him.

These events were all co-ordinated by Michael Moreton, who was a son of a former Canon and learned to ring at Hereford Cathedral. He was one of many young ringers encouraged and tutored by Leslie and has since maintained a regular lifelong contact through the past sixty years. Like his mentor, Michael Moreton has become a name recognised in campanological circles across the country.

Happy Birthday Leslie!

Barry Freeman

FOOTNOTE: THE HEAVIEST TENOR BELLS

When I asked Leslie how the 30 cwt. tenor bell at South Croydon ranked in terms of weight, he immediately reeled off the following weights: Liverpool 84 cwt., Exeter 72 cwt., York 63 cwt., St Paul's 62 cwt. and Worcester 49 cwt. For good measure he added that Worcester has the finest ring of 12 bells in the world.

(NOT MANY PEOPLE KNOW ALL THAT).

WHO'S WHO?

On the following two pages you will find Who's Who? for Eardisland.

I would be grateful if you could check this for accuracy. I've not published this for some time and I therefore expect that some names and numbers will have changed since the last time.

If there are changes to be made, please contact me via the 'Contacts' page 38 in this edition.

Many thanks,

Chris Bivand

WHO'S WHO? - EARDISLAND 2009

Organisation	Contact	Address	Telephone
Bowling Club	Pat Roche	5 Green Elms	01544 388492
Chess Group	Peter Glenn	Bridgend, Eardisland	01544 388364
Church: Vicar	Nigella Tyson	The Rectory, Kingsland, Leominster, HR6 9QW	01568 708255
Church Wardens	Serena Askew	The Granary	01544 388637
	Jim Collins	Hardwick House	01544 388308
Deputy Warden	Dian Cope	Downome	01544 388317
PCC Secretary	Lotty James	Glan Arrow	01544 388207
Cricket Club	Claire Price	Lime Cottage	01544 388309
Eardisland Community Millennium Fund	Barry Freeman	Holmlea, Church Lane	01544 388226
Eardisland Dovecote Trust	Barry Freeman	Holmlea, Church Lane	01544 388226
Eardisland Twinning Association	Ruth Brinton-Bivand	Arrow Bank	01544 388375
Eardisland Village Band	Ruth Brinton-Bivand	Arrow Bank Eardisland	01544 388375
Herefordshire County Council	John Goodwin	Delfryn, Eardisley	01544 327086 01544 327112
Eardisland History and Heritage Society	Chris Wolland	12 St Mary's Walk	01544 388981
Herefordshire Times Correspondent	Diane Wolland	12 St Mary's Walk	01544 388981
Neighbourhood Watch Co-ordinator	Keith Mitchell	Arrow Lea, Eardisland	01544 388605
The Team	Mike Coleburn	Jubilee Cottage, Upper Hardwick	01544 388486
	Gerry Corfield	Broom Lane	01544 388575
	Barry Freeman	Holmlea, Church Lane	01544 388226

	John Holding	Old Pearmain, Burton Lane	01544 388176
	John Hope	Lower Hardwick Farm, Lower Hardwick	01544 388504
	Brian Pollard	Stephen's Cottage, Church Lane	01544 388915
	Graham Simpson	Lyme Lane	01544 388641
	Ben Woodcock	2 Orchard Cottages	01544 388976
Parish Council Chair	Serena Askew	The Granary Eardisland	01544 388637 serena.askew @btconnect.com
Clerk	Andrea Armour	20 Oaker View, Leominster HR6 8SG	01568 613729 andrea@andreaarmour.wanadoo.co.uk
Parish Magazine	Chris Bivand	Arrow Bank	01544 388375
Police	PC Sharon Wilson	Kington Police Station	07970 602344
Community Support Officer	Donna Jones	Kington Police Station	07970 602340
Village Hall	Jill Richards	The Bungalow	01544 388323
Hospice volunteers	Dorothy Brown Beryl Hoda		01544 – 388389 01544 – 388131
Whittington Trust	Peter Davenport	Hinton Manor	01544 388234
W.I.	Mavis Tantrum	Black Barns	01544-387972



**Bar and Restaurant
Eardisland
Leominster
Herefordshire
HR6 9BD**

Tel: 01544 388577

www.thewhiteswaneardisland.co.uk
Enqs@thewhiteswaneardisland.co.uk

**The White
Swan**

**Food Served Tuesday - Sunday 12pm 'til 2.30pm
Every Evening 7pm 'til 9pm (later by arrangement)**

**Large Parties catered for, Takeaway Service Available
Large Beer Garden to the Rear, Children Welcome
Senior Citizen lunch Thursdays, £5.50 2 Course
Outside Bars and Catering Services Available
Live Music Monthly, Free Wi-Fi Access
Sunday Lunch £6.50 (Booking Advisable)**

We look forward to seeing you

THE BURNS NIGHT SUPPER

Eardisland Village Hall: Saturday 24th January

An Appreciation by Barry Freeman

Here was another splendid evening to start the year's entertainment programme in grand style and celebrate the 250th anniversary of Scotland's greatest poet.

Although our northern neighbours may have lost much of their reputation for financial acumen, Burns' star still shines brightly around the world, kept alive by an extraordinary 36,000 Burns clubs and societies.

The hall was packed and we tucked into copious quantities of haggis, freshly flown from the northern haggis moors. Sterling work had been undertaken in the kitchen by Yvonne Thomas and a team of helpers and we all ate ourselves to a standstill.

But there was to be no standing still. A band of rare talents assembled on the stage, all from Kington except for our local violin virtuoso Richard Harper. Led by Dave Rogers on the accordion, the band comprised four members of the extraordinarily

versatile Alloway family, the youngest of whom is still at primary school and a member of the National Children's Orchestra, and their friend Charlie Hill.

Between them they gave us two violins, banjo, guitar, clarinet, recorder and harp. To enjoy the fresh enthusiasm of highly talented young people is always inspiring.

Tutored with infinite patience by Dave Rogers, we danced a number of traditional folk dances where, for the most part, enthusiasm exceeded skill, but it certainly shook the haggis down.

The evening was organised by Eardisland Twinning Association as a fundraiser for the entertainment of our French guests from La Vieille Lyre later in the year. Everyone involved had as always put a huge amount into making the occasion memorable and we their guests all say a big thank you.

EARDISLAND COMMUNITY MILLENNIUM FUND

ANNUAL REPORT FOR 2008

Formed in January 1996, ECMF has now completed 13 years of service to the local community. During 2008 we have followed our established policy of using ECMF financial resources as widely and effectively as possible.

All our expenditure is directed towards supporting local events, activities and organisations, particularly through paying for publicity which accounts for some 50% of expenditure. Publicity in this context includes press advertising (Hereford Times, Journal and Admag), W.I. advertising, mailouts, flyers, posters and signs.

The Importance of Adequate Publicity

Adequate publicity for each event, and for the whole village as a visitor destination, is essential. This is what brings outside money into our community and it is only by continually attracting this outside finance that we can survive as a viable community. This is particularly so now that an appeal for church heating and fabric maintenance has been launched.

The annual 'Welcome to Eardisland' leaflet is another important aspect of publicity generation. Funded by village businesses, the Parochial Church Council and the Dovecote Trust, it is published and distributed by ECMF and the editorial publicises the church and dovecote exhibitions and the main events each year.

Summary of Main Expenditure

1. The three main events: Flower Festival; Open Gardens; Fun Day; ECMF input £1,324. Total Net Proceeds £3,796;
2. Other Activities; Eardisland in Bloom (see below); Church Appeal set-up costs; Neighbourhood Watch; French Classes Twinning Association; Village Band plus numerous miscellaneous expenses e.g. Hirings of village hall, new Eardisland sign at Legions Cross, Church visitor maps. Total ECMF input approximately £1,000

Acknowledgements

As in every year, ECMF has received the support and co-operation of the Parish Council, Parochial Church Council, Village Hall Management Committee and the Dovecote Trust, as well as numerous individuals.

Again, as always, the wise counsel of committee members is readily acknowledged and we have been pleased to welcome two new members, Margaret Milchard and Ben Woodcock, both of whom are active participants

in various local activities.

Finally, specific mention needs to be made of Margaret whose enthusiastic organisation of her second Eardisland Fun Day raised £867 for ECMF funds, £800 of which has been donated to the church appeal, and of Derek Wareham who raised a profit of over £500 on organising our Eardisland in Bloom entry. Derek has been our painstaking and indefatigable treasurer since day one in 1996. We are also grateful that Jo Watson has assumed our secretarial duties since January.

Barry Freeman: Chairman ECMF

EARDISLAND DOVECOTE TRUST

Annual Report for year ending 31st October 2008

Opened to the public in September 1999, the dovecote has now been open on a continuous daily basis for over 9 years. This level of opening far exceeds any other museum or heritage centre in Herefordshire.

The dovecote continues to attract and interest visitors who have made over 400 entries in the visitors* book this year, with donations a little above the previous year.

As in previous years, the Dovecote Trust has acted as the booking agent for press advertisements for the Flower Festival, Open Gardens and Fun Day. As a registered charity this gives a discount plus nil VAT rating, a saving of almost £100 on the three events. The Trust is then reimbursed by ECMF. The Trust also holds the lease on the public car park thus avoiding the business rates the Parish Council would have to pay.

Currently Herefordshire Council is considering an application from the Trust to upgrade the ground floor displays which will show a variety of local activities, including those of the History and Heritage Society and the Twinning Association.

The major expense as always is the insurance on the building and surrounds, the car park and AA box, and the exhibition contents. The current premium is £1,184; next year's is likely to be around £1,250.

Our thanks are due to Derek Wareham and Jenny and John Gittoes who continue to be of assistance both within the displays in the main building and with the AA box garden.

The secretary has recently asked the Parish Council to take up the question of overhanging and encroaching ivy with the Manor House owner. The public car park would appear to have an adequate surface to last for the coming visitor season of 2009.



*Arrow Bank
Bed and Breakfast*

*Eardisland,
Leominster
HR6 9BT*

01544 - 388375

*chrisbivand@bivand.freeserve.co.uk
www.arrowbankbandb.co.uk*

*Quality accommodation
in en-suite rooms at
reasonable prices*

PIP CLARK

Bowley Lane, Bodenham

*LARGE AND SMALL DOMESTIC APPLIANCE
REPAIRS AND SERVICE*

APPLIANCE SALES – FREE DELIVERY AND FITTING

Competitive prices



Friendly, reliable service
Small plumbing jobs also undertaken

Mobile: 07971 422034

INTERNATIONAL BIRDS OF PREY CENTRE

I managed to catch up with Jemima Parry-Jones a couple of weeks ago and talked about the intended International Birds of Prey Centre in Eardisland.

The current situation is that she has bought back the National Birds of Prey Centre in Newent, originally started by her father in 1966, and renamed it the International Birds of Prey Centre. She plans to re-open this at the beginning of February and is currently being helped by a large team of volunteers to renovate the centre before the public start to arrive. The overall plans are much as she intended for Eardisland, with flying displays, café and shop. She will end up employing around 12 staff to run the various parts of the business.

This has clearly been an expensive business in both time and money. Quite apart from the purchase price of the land and barns in Eardisland, there must have been considerable expense in

terms of architects' fees, planning applications and the rest (including the large barn that was built).

Jemima made the point of saying that the various constraints imposed by the planners made the Eardisland project a difficult prospect and was a major factor in deciding to withdraw.

She is quoted as saying in 'The Citizen' (a Newent paper) "I have lost around £730,000 in the process of the moves . . ."

Jemima was keen to say that she had made some real friends in the village and greatly enjoyed singing in the choir. She hopes that people from the village will keep in contact.

All this means that the Eardisland site is back on the market, complete with the three large barns. This is really not the right economic time to sell, but presumably it will sell sooner or later. I, for one, will keep a close eye on what the next proposal turns out to be.

Chris Bivand

A TRIP TO DELHI

Delhi is quite the most extraordinary combination of wealth and poverty, ugliness and beauty, and partly organised chaos you are ever likely to come across. Being there for Christmas and the New Year, we experienced all of these in good measure. The sense of the contrasts started at the airport, where our driver had to shoo away a cow that was casually wandering around the car park – well, you don't get that at Heathrow.

Given that the tragedy in Mumbai had happened only a few weeks before, security was tight with armed police very much in evidence – all cars going into the hotel were searched by rather large men with machine guns, for example, but we found this rather more reassuring than threatening. We followed the world news via the room satellite TV – CNN or BBC World, both of which largely featured the conflict in Gaza. However, of interest was the Indian perspective as expressed in the Rajistan Times (similar in reputation to our ‘Times’). This paper barely mentioned Gaza, but led almost every day on the poor relationship between India and Pakistan, always referred to as ‘Pak’; this, I discovered, is not a term of abuse equivalent to ‘Paki’, but merely a neutral truncation of Pakistan. Be this as it may, one cannot help but worry about two nuclear powers with such mutual animosity.

The seat of power lies in the Government buildings in New Delhi, designed by the British architect Edwin Lutyens having been selected for the task in 1913. Lutyens is famous for designing buildings sympathetic to local history and traditions, and he certainly succeeded in New Delhi with elegant formal buildings which reflect aspects of India’s turbulent past, and with a strong sense of empire, as one would expect given the times in which Lutyens worked.

Even in the heart of this capital city, poverty is all too apparent. Small mounds of suffering humanity sleeping under grimy blankets can be seen just about everywhere. Stopping at traffic lights attracts a swarm of beggars and just walking around acts as a magnet for people who want to act as ‘guides’, for a fee of course. This said, however, a smile and politeness usually sorts out problems.

There is much to do in Delhi and we kept pretty busy for two weeks. There are all the things you would expect in a capital city and more besides. I’ll just mention Jantar Mantar, an extraordinary 18th century observatory which looks a bit like modern art, but in fact can make the most incredibly accurate astronomical measurements, and Indira Ghandi’s museum. You may recall that Indira Ghandi was assassinated by one of her body guards as she was returning to her house. The museum displays her personal possessions, books, clothes etc. within her former residence and includes the blood-stained sari worn when she was shot. The garden has a small shrine at the point where she fell. It’s all deeply moving.

All in all this was a most interesting trip, although the weather was a bit dreary with fog every day, clearing for a few hours around midday. Finally, a word of warning if you are intending to travel anywhere: the decline of the pound sterling really hurts! Recon on things costing around 20-25% more than this time last year, and this really makes a difference.

Chris Bivand

MEMORIES OF THE CLOWES OF BURTON COURT

Two interesting items of local information have recently come to light regarding Colonel and Mrs Edith Clowes. An obituary for Mrs Clowes, from 1949 and a reference to the Colonel in a book published in 1912.

It is 60 years since the death of Mrs Edith Clowes, MBE, in Burton Court. She died late in 1949 aged 83. She was the daughter of George Warren of Wootton, Liverpool. He was a wealthy man who was involved with a shipping line. Mrs Clowes married Colonel Peter Clowes in 1895 in Leighton Buzzard. They came to live in Burton Court in 1902 when he returned from the South African (Boer) War. Their only son, Warren Peter (known as Master Pat), was born in 1898 and killed in Amiens in 1918. Mrs Clowes was invested with the MBE in that year. She was always very committed to the work of the Red Cross and was President for Herefordshire. She was also interested in the work of local hospitals including the 'Linen League' in connection with the Leominster Hospital.

She was a Magistrate and sat on the Weobley Bench; she was also member of the Weobley Board of Guardians. Like other members of the Clowes family,

Edith was always involved with the local hunts; in particular, she was a member of the Radnor and West Hereford Hunt. Opening meets and Hunt Balls were frequently held at Burton Court.

Edith Clowes was an enthusiastic supporter of the Conservative Party and for some years prior to 1930 was President of the Women's Branch of the North Hereford Conservative Association. She also supported the church in Eardisland, providing the organ in memory of her son. Her deep involvement in the life of the community is evidenced by the number of committees on which she served. She had been Church Warden and was Vice President of the Eardisland Society of Bell Ringers. She had also been Chairman of the Eardisland School Managers. She was a committee member of the RSPCA and was President of the Leominster Show in 1924 and of the Kington Show in 1932. She had also been Governor of Leominster Grammar School and was Chairman of the Herefordshire Women's Farm Labour Committee and a member of the Kington and Weobley subcommittee of the Herefordshire Wages Committee in 1918 when this was established. She had been Chairman of the Eardisland British

Legion, the Eardisland Reading Room, the Women's Institute, the Bowling Club, the Cricket Club and other local organisations.

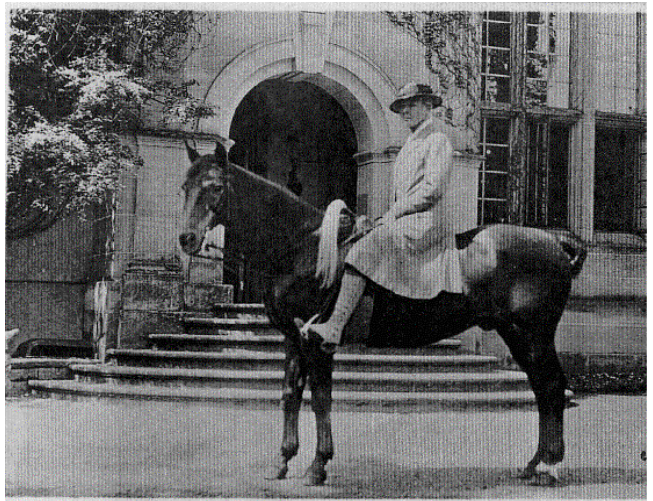
It was said that at her funeral there was a note of rural simplicity about the arrangements. The coffin was borne from Burton Court, her home for nearly 50 years, on a farm wagon drawn by her favourite pony, Dobbie. On the coffin was a fox's brush and what

was said to be the last flag of the Warren Shipping Line, whose first ship was named 'Edith'. At the start of the service a half muffled peal was rung on the bells as the congregation assembled and after the service the bells were rung again, but this time the muffles were removed. It was said that all classes of the community were represented. Burton Court was duly sold in 1950.

Mrs Clowes with Master Pat in about 1902



Mrs Clowes in about 1942



PETER CLOWES

A book has recently been obtained "Chances of Sports & Sorts" by Colonel T.A. St Quintin, published in 1912, which contains interesting information about Col. Peter Clowes (1854-1925). I am indebted to Roger Brookes for bringing it to my attention.

Col Clowes was a member of the 8th Hussars and served in Afghanistan, India and S. Africa and he is mentioned by the author in relation to his skills as a horseman.

Quintin describes the forming, in 1866, in India of the 'Meerut Tent Club'. This was a kind of social club for officers. In 1874 two of the Club members gave a trophy, named the Kadir Cup (which was even then valued at £120). Thirty-two people competed in teams of 4 over a period of about three weeks. The aim was to hunt down kill as many pigs as possible using 8-foot long spears. (But, the author warns, "no spear was to be delivered on the near side, if so it was not to be counted").

There was a period of preparation involving racing, polo matches and feasting and drinking

before elephants took the participants to Kadir where the wild pigs were to be found. In one example of the dangers associated with the attempt to win the Kadir Cup, 8 men in 22 days killed 108 boars. Of the 8 men, all but one suffered some serious injuries: one was unable to resume duties for 4 days, another 3 days and 2 others 7 days each. Of 32 horses, 2 were killed, 5 severely injured and 7 slightly cut by pig, "two were broken down, six stubbed and staked and only one had no mishap over the 22 days". The author concludes that, "The mighty boar is no mean antagonist." The 8th Hussars, described by Quintin as a "a sporting lot" included Col Clowes, whose team won the prestigious Cup in 1870's.

It is perhaps not surprising that he and his wife Edith subsequently became very involved with local foxhunting groups when he returned to Burton Court after 1902, an activity presumably a good deal less hazardous than those entailed in winning the coveted Kadir Cup.

Paul Selfe

SANDWITH, VESEY, THOYTS, DUFF, PALEY, CLOWES, GREATHEAD, LANGDALE, PAGE MAHON (Q.M.), BIRD, BUCHANAN, (ADJT.).



DEARE, WOOD, DAVIDSON, ST QUINTIN, HENDERSON, ANDERSON, TOMBLINGS,
LAWLESS, (C. O.), MUSSSENDEN, (R.M.).

8TH KING'S ROYAL IRISH HUSSARS, NORWICH, 1892.

HEATING OIL AND AGA/RAYBURNS

If you have an oil-fired AGA or Rayburn you probably dread the arrival of the oil bill. To give an idea, an ordinary 2 oven AGA, without running hot water or radiators, uses 6cc per minute. This doesn't sound much, until you do the sums. In a week, this amounts to approximately 60 litres of oil – this, of course, will be more if the cooker also does hot water or runs radiators, and will also be affected by how much the cooker is used and the ambient temperature. Oil is around 40p per litre at the moment, so this comes to a weekly bill of about £24 – which is a lot of money for a hot box.

There is a way to reduce this and do something for the environment at the same time. It is

possible to convert most (but not all) AGA and Rayburn cookers from an oil wick to a fuel injection system; the conversion needs to be done by an engineer, or a good amateur, and takes less than a day. From the outside to cooker looks exactly the same when it's all finished.

The main advantages are that the injection system is much more efficient, so you use less fuel. Depending on use, this amounts to about £8 a week on the figures above, so if your AGA/Rayburn is on for a year the saving is over £400.

The second advantage, and this is really important, is that, because the injection system runs much hotter than a wick, the heating up time is correspondingly quicker,

so the unit can be switched on and off by an automatic timer, just like central heating. So, you might time it to switch on at, say, 5.00am for breakfast at 7.00am and off again if you are out through the day, back on at 3.00pm and off again at, say, 9.00pm.

This would make a very substantial further savings over a year, and would be far better over a hot summer – now apparently a thing of the past - when you may just want to cook the occasional meal.

Given that the specification for heating oil has been reduced over the last few years the service intervals for wick devices has also reduced, thus costs have increased. The injection system only needs

servicing annually and its performance does not deteriorate in between.

On the downside, my experience is that the AGA is now hotter on the hobs and top oven, and cooler in the bottom oven. This is not a big problem; it's just a matter of getting used to the new temperatures. It also makes a noise rather like a central heating boiler. Of course, if you are eating in the same room as the cooker all you have to do is switch it off and on again when you've finished.

If you wish to pursue this you are welcome to see my AGA and find out what's involved. Further details are available from www.snughome.co.uk.

Chris Bivand

COMPUTER WARNING

Whilst I was working on the last magazine I encountered quite a few computer problems – ‘freezing’, taking ages to start up and generally playing up. To cut a long story short, the diagnosis was that the main hard drive (drive C) had almost given up the ghost. Luckily, I had bought an external hard drive some time ago and had backed up all my important files. I was amazed when I came to think of all the records going back over years – all the B & B files, tax details, holiday pictures, all the Eardisland magazines for the last eight years or so, personal letters, e-mail

addresses and all the e-mail records, umpteen programs for cameras, word processing, scanner, printer and much more.

Of course, the immediate problem was easily resolved; just getting a new hard drive (Maplin, Hereford – next to Halfords, in my case) and putting in the ‘box’. The fitting took about five minutes, if that. Then the work really started.

Firstly, the operating system had to be restored (Windows XP), which turned out to be more complicated than I had bargained for, then all the software to run printer and scanner, then the

'Office' suite, then all the drivers for cameras etc. This took a couple of days.

After all this, the personal settings for e-mail, word processing etc. had to be done – one of the most frustrating things I've come across for many a long year, for example all my e-mails managed to be sent, but without my name on them and this alone took ages to sort out. Then all the photos and document files had to be copied back from the external drive. After many, many hours I'm still trying to sort out some of the more minor details.

Now, you can guess the moral of this account. If you have and use a computer you really need to think carefully about backing up all the things you really can't afford to lose – and all the things that just cause sadness, like the loss of photos.

There are two essentially two routes to take: backup files to external media such as CD, DVD,

hard drive (F) or internet. There is both free and commercial software to do this. Alternatively you can make a 'mirror image' of the hard drive to an external hard drive. The advantage of the latter is that you will save your whole system including the operating system and all the settings, the downside is that the software is relatively expensive (say £40 for a home setup plus the external drive).

If you don't have the technical knowledge to cope with this, I really recommend that you consult someone who does – there is an advert on the back page of the magazine which might help.

I found that www.maplin.co.uk was helpful for finding components, and Google for getting basic information.

I urge you to think about this and take action NOW if it's relevant to you, after all £100 spent could save countless hours of previous work and photos which are personally very valuable.

Chris Bivand

THE CHURCH APPEAL: A CASE OF DÉJÀ VU

by Barry Freeman

With our church appeal prominently featuring a replacement heating system and the roofs of the tower and south porch, it was particularly interesting to receive a photocopy of a letter circulated to all parishioners in 1927. Thanks are due to George Alderson for bringing this gem back into the daylight.

Dear Sir or Madam,

The Parochial Church Council is once again faced with a very large expenditure on the Parish Church.

1. THE ROOF. Five years ago we spent about £5 on repairs, but since then the roof has become more and more dilapidated, and the constant falling of plaster is positively dangerous. The only course is to strip and re-tile the south side, and an asbestos ceiling is recommended. The north side and porch can be repaired.

The cost of this work is very difficult to estimate, but we dare not budget for less than £250.

2. THE HEATING APPARATUS. This is not only ineffective, but the boiler is worn out. A competent engineer recommends a new boiler and three additional radiators. The cost will be about £80.

With architect's fees, expenses and contingencies the total cost will probably be not far short of £400.

This is a very large sum for a small country parish but the absolute necessity of the work, if our beautiful church is not to be allowed to fall into decay, makes us confident that everyone will contribute their share as generously as they did five years ago when we had to re-roof the tower.

We shall be grateful for the smallest contributions, as well as for larger sums, and they may be sent to any of the undersigned members of the Church Council.

PERCIVAL A. H. BIRLEY, Vicar and Chairman; EDITH E. CLOWES, Vice-Chairman, THOMAS G. SMITH Churchwardens, and EDITH SMITH Hon. Secretary TOM WOOD, Treasurers

Note. The above transcript is slightly abridged. A photocopy of the original is displayed in the church, on the appeal table.

Footnote. The Victorians undertook a major restoration of our church in the 1860s and considerable work, as outlined above, was again necessary in the 1920s, sixty years later. Now, another eighty years down the line, it is our turn to take up the challenge to pass our inheritance on in good shape to those who will live in Eardisland in the late 21 St century.

WEATHER REPORT 2008

Although rainfall in November was moderately above the norm with 76mm (3 ins.) the year ended on a dryer note. In December there were only four days with measurable rainfall and one of them had only 0.2mm. Overall, the December total of 30.4mm was less than half the normal amount for the month (usually December is one of the two wettest months of the year – the other is October). Even so, 2008 was the fourth year in a row with above average rainfall. The year's total of 915.8mm (36½ins.) was approximately 43% above the norm. Although there were no extremely hot periods in the year the average annual temperature was slightly above usual. December, however, was unusually cold, the first week was the coldest beginning to winter since 1992. There was a scattering of mild sunny days later in the month before the cold weather set in again at the end of the year.

Peter Glenn



Leominster & District



COST?

£5.00 PER HALF-HOUR APPOINTMENT
(You'll need to purchase a Footcare Kit at a one off price cost of £10.00)

WHERE?

VARIOUS SURGERIES THROUGHOUT
NORTH HEREFORDSHIRE

FOR MORE INFORMATION OR TO BOOK AN
APPOINTMENT PLEASE PHONE
01568 611054 OR CALL INTO THE OFFICE AT
30 West Street. Leominster

**UNIQUE
LANDSCAPES**



**CONSTRUCTION • DESIGN • PROJECT MANAGEMENT
CONSULTATION • ASSOCIATED SERVICES**

Shaun Greetham (HNC Management/Design)

Mobile: 0777 88 44 878 Tel. 01584 831733

Email: shaun@uniquelandscapes.co.uk

www.uniquelandscapes.co.uk

**JOHN TAYLOR
FUNERAL SERVICES**

John Taylor
(Funeral Director)

5 Mortimer Drive, Orleton,
Ludlow, Shropshire, SY8 4JW
Tel: 01568 780532 / Mob: 07855 232958

FOOT HEALTH PRACTITIONER

CARING FOR YOUR FEET

Nails Trimmed

Corns Removed

Calluses Reduced

Ingrown Nails

Verrucae Treatment

Catherine Perham Dip.CFHP

HOME VISITS

Telephone 01544 388728

OR

07765 484627

CONTACT THE EDITOR

Please forward your magazine copy, in any form, to:

Chris Bivand, Arrow Bank, Eardisland, Leominster, HR6 9BT

☎: 01544 – 388375 (answer phone available)

e - mail: chrisbivand@bivand.freeserve.co.uk

This edition of the Eardisland Parish Magazine was printed by
Oldlands Press courtesy of Andrew Rixon

The copy date for the next edition of the Eardisland Parish Magazine is:

FRIDAY, 6th MARCH 2009

Published by Eardisland Parish Council. Views expressed are those of individual contributors and not necessarily those of Eardisland Parish Council.

Kitchen Revivers

Want a unique hand painted kitchen without the
expense and hassle of buying a new one?
Then let Kitchen Revivers take your existing kitchen
and give it a makeover.

For a free quotation or just to find out
more ring Sally on

07702603209 or see our web site

www.kitchenrevivers.co.uk

Sunday 8 March – 2nd Sunday of Lent		
8.00 am	Holy Eucharist BCP	Kingsland
9.30 am	Matins BCP	Eardisland
9.30 am	Holy Eucharist CW	Aymestrey
11.00 am	Sung Eucharist CW	Kingsland
Sunday 15 March – 3rd Sunday of Lent		
9.30 am	Holy Eucharist BCP	Eardisland
11.00 am	Sung Eucharist BCP	Kingsland
3.30 pm	Evening Prayer	Leinthall Earles
6.30 pm	Choral Evensong BCP	Kingsland
Sunday 22 March – 4th Sunday of Lent, Mothering Sunday		
8.00 am	Holy Eucharist BCP	Kingsland
9.30 am	Family Eucharist CW	Eardisland
11.00 am	Family Eucharist CW with Aymestrey congregation	Kingsland
Sunday 29 March – Passion Sunday		
9.30 am	Benefice Eucharist CW	Eardisland

**And at 10.00am each Thursday unless otherwise stated:
said Holy Eucharist BCP at Kingsland**



IT Solutions UK
Network & PC Engineer

The answer to all your **COMPUTING** needs:

Email and Broadband setup

PC & Laptop repairs & upgrades

New PC's & Laptops supplied
(Bespoke service- including delivery & onsite installation)

Virus removal

Home & Business network installation
(wired or wireless routers)

**Whenever possible, work will be
carried out at your home
or business address**

Contact Andy Marshall on:

0845 867 3753

07813 651 199

Email: andy@ITSolutionsUK.eu