

EARDISLAND PARISH MAGAZINE

NOVEMBER 2023

ISSUE 197



MERRY CHRISTMAS AND A HAPPY NEW YEAR

In this issue:

| | | | |
|---------------------------|----|-----------------------|----|
| Index/Editorial | 2 | Twinning Association | 15 |
| Parish Diary | 3 | Neighbourhood Watch | 16 |
| Parish Council | 4 | Memorial Walks | 16 |
| Herefordshire Council | 5 | Church Matters | 18 |
| W.I. | 6 | Christmas Tree | 19 |
| Christmas Treat | 7 | Advent Angel Festival | 20 |
| EVHMC | 8 | St. Michael's Hospice | 21 |
| Eardisland Village Lights | 9 | Craft & Produce Fair | 22 |
| Christmas Food Fair | 10 | Eardisland in Bloom | 23 |
| E&SG | 11 | Weather Report | 23 |
| Community Shop | 13 | Contacts | 35 |
| Mortimer Medical Practice | 14 | | |

EDITORIAL

After I received the Parish Council text from the Parish Clerk, I learnt that Cllr. Merry Albright had resigned. This seems remarkably soon after the May election. The PC is now in the process of following the legal procedure for her replacement. Thanks to Merry for her contribution as a councillor.

We seem to be in a new era of consumerism, a non-stop parade of 'shopping opportunities'. *Which* reports that many of the cheap offers have been even better value at other times of the year. Its advice is to be very careful with 'special offers', which may not be special at all.

Alongside all these offers is the ever-present risk of fraud. The internet has provided many advantages but, sadly, opportunities for tricksters. I have reported some of these over the years, unfortunately they are particularly prevalent at this time of year. Please be careful, especially with credit card fraud. Remember, banks and official bodies, including the police, will NEVER ask for your financial details. Why would a bank ask for your details? They have them already. If you are suspicious, do not engage on the internet or phone. Log off or put down the phone and phone your bank's fraud department, ideally on a different device, if you have one.

As always at this time of year, thank you to all those who make the Eardisland Parish Magazine possible, by writing, supporting or delivering. Without you there would be no magazine.

Finally, I wish everyone a very Happy Christmas and New Year.

Chris Bivand

EARDISLAND PARISH DIARY 2023

| | |
|--|---------------------------------------|
| Saturday 2 nd December | Christmas Tree, p.19 |
| Saturday 9 th December | Eardisland Christmas Lights, p.9 |
| Sunday 10 th December | VH Christmas Food and Gift Fair, p.10 |
| Thursday 14 th December | Parish Council Meeting (if required) |
| 2024 | |
| Friday 5th January | Magazine Copy Date |
| Friday 1st March | Magazine Copy Date |
| Friday 3rd May | Magazine Copy Date |
| Friday 5th July | Magazine Copy Date |
| Friday 6th September | Magazine Copy Date |
| Friday 15th November | Magazine Copy Date |

Please note that there are various other dates relating to events associated with the church detailed in the section 'Church Matters'.

Please remember that, whilst I always do my best to ensure that the magazine is distributed on time, there are factors that are out of my control. Most importantly, that copy arrives to me by the copy date, that's not ON the date but BY – there is an important difference. I will always make exceptions if I have advance notice of an event that falls, say, on the Saturday after the copy date, which is always a Friday.

Of course, there are unpredictable events, such as a flood, accident or death that need to be recorded. These have to be dealt with according to the circumstances, but please remember that I can't report on events that are not reported to me – my contact details are on page 35, and in every magazine and on the community website.

Once the copy is with the printer, we are all entirely dependent upon the printer, delivery to the Delivery Manager (Barry Freeman) and the delivery team. If you are planning an event, please remember that things can go wrong, and a 'tight' date may not work. It's better to advertise what's on well in advance and repeat the information nearer the occasion.

If you wish to advertise events on the community website, please contact Ben Woodcock: ben@eardisland.org.uk .

Ed.

PARISH COUNCIL

1. I would like to give special thanks to Susie Curtis and the Eardisland Village Hall Management Committee for all efforts made to keep this village thriving. You have all gone above and beyond for this Village.
2. This time of year can be difficult for some, and you shouldn't suffer in silence. Here are a few helplines for those wishing to reach out:
We are Farming Minds
24/7 support line 0808 802 0070 or text 07786203130
CALM (Campaign Against Living Miserably)
5pm-midnight 0800 58 58 58
Tackle Loneliness with The British Red Cross
24/7 support line 0808 196 3651
3. The **Parish Council Website** can be accessed at eardisland-pc.gov.uk with the community website continuing to provide all other information at [Eardisland Community Website](http://EardislandCommunityWebsite)
4. **Parish Council News Alert emails**
Keep up to date with news from the Parish Council by registering for news alert emails. Go to eardisland-pc.gov.uk , scroll down to the bottom of the page and complete your details in the space provided bottom left. This will enter you onto our "Mailchimp" email list. Emails are only sent out occasionally - we will not flood your inbox!
GDPR requires people to give positive consent for the Parish Council to hold personal data and to allow you to receive emails. Please contact the Clerk if you wish your name and data to be removed from the list for news alerts.
5. The following **Planning Applications** have been considered or noted at recent Parish Council meetings:

P232953/XA2 – PP Approval of details reserved by condition: Staick Cottage, Eardisland, Leominster, Herefordshire HR6 9BU. Application for approval of details reserved by conditions 3, 4, 5, 6 attached to planning permission 224071.

P233235/FH – Planning permission: Home Farm, Eardisland, Leominster, Herefordshire, HR6 9DN. Proposed extension to dwelling.

6. The Parish Council would like wish everybody a very Merry Christmas and a Happy New Year.

Amber Littleworth
Parish Clerk

YOUR LOCAL HEREFORDSHIRE COUNCILLOR'S REPORT – ROGER PHILLIPS

rjphillips@herefordshire.gov.uk

Our new Community Support Officer

I was pleased to meet with our new Community Support Officer Emma Torberfield who replaces Dean Wall. I explained some of the local concerns on speeding, heavy vehicle and farm traffic, burglaries, and illicit drugs. She encourages people to sign up to the police email alerts available on their website, copy and paste link below.

<https://link.edgepilot.com/s/bb21d405/UARq0VNajkqv1vLf0zKSJQ?u=http://www.neighbourhoodmatters.co.uk/>

20 mph village pilot

Pembridge was chosen to be the Herefordshire pilot village project for 20 mph schemes, and I wanted to share the emerging results with my other villages. After over 18 months it showed in general a reduction of approx. 5 mph in speeds through the village from approx. 33 to 28 mph. If the intention of the 20 mph speed limits is to make drivers drive below 20 mph then it clearly needs more enforcement as that has not been achieved; but if the project is to reduce speed and therefore reduce risks and severity of injuries then the figures are positive.

Clearly just changing signs from 30 to 20 as in Wales is not enough. It is important to consider all the investment that has been put in - beginning in 2018 with the relining of the highways and the removal of the centre middle line. While there was no measurement of the village centre it is clear that speeds here have declined and drivers' awareness increased - laying of roundels, repeater signs plus the flexible use of the speed indicator device have all contributed to the results.

Speeding is a big local concern in all local villages and the results of this project will be sent to the Police for their comment and to influence any roll out of such similar limits elsewhere. In these financial times diverting funds from highway

maintenance to these schemes needs careful assessment and I will be interested in West Mercia's comments particularly around any enforcement.

Our local GP surgeries

I recently attended a presentation by the Hereford Group Practice (HGP) which is an organisation made up of and working across all 19 medical GP practices in Herefordshire. Formerly working under the Taurus identity, the HGP supports each GP practice cope with increasing demands on local surgeries. Although 90% of people's contact with the NHS is via their GP Surgery it only accounts for 8% of the total NHS spend in Herefordshire. (The most significant funding going to the Wye Valley trust and Hereford Hospital). Every two years there is a 10% increase in demand on GP surgeries reflecting the maturing population of our County.

Two ways HGP is supporting local surgeries are by developing a Herefordshire Remote Health (HRH) where using a remote workforce by telephone or video consultations can take place and secondly establishing hubs for evening and weekend appointments.

Herefordshire is in the top three counties of the UK for delivering covid vaccinations. Last month saw again the delivery of the national covid and flu injections for this year and the take up in Herefordshire is again impressive. This autumn also saw the launch of the NHS mobile phone App which gives online consultations.

ROGER

Report a serious pothole, flooded road or highway obstruction - Balfour Beatty Living Places: 01432 261800 <https://www.herefordshire.gov.uk/reportingapp/>
Footpaths issues:

- PROW - PROW@herefordshire.gov.uk
- PROW No – 01432 383 550

Report fly-tipping it will be dealt with in a much quicker time frame either by calling the Contact Centre on 01432 261800 or by logging the fly tipping via the council website on the links below as your
https://link.edgepilot.com/s/f452e836/Hy5YWk_SgEGkleekL2ROFQ?u=https://www.herefordshire.gov.uk/info/200226/report_a_problem/98/fly_tipping

EARDISLAND WI

After the summer break in August the WI resumed the autumn programme with a visit from the RSPCA. Bob, introduced us to Bryn and Skye his helpers with the talk on the valuable work carried out by the RSPCA in Herefordshire. Bob then told us a story of a young dog that was very badly injured in a road traffic accident and was not expected to live. The vets would not operate on the dog as

it was too young. An RSPCA volunteer took this dog and after many months the dog recovered, the dog of course was Skye, and the volunteer was Bob.

On a fabulous day at the beginning of October the ladies of the WI met just outside Eardisley at Orgasmic Cider for a tour of the organic and commercial orchards to see the variety of trees, including one of the oldest hazelnut trees in the country and an oak at the centre of the orchards which may be up to 1200 years old. A lovely afternoon to taste the cider and enjoy the exceptional weather.

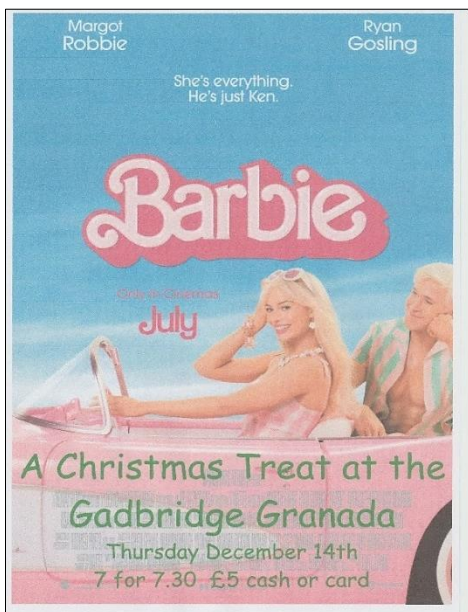
The November meeting was an open meeting where Clare Wychbold, a notable local historian came to talk to us about The Suffragette Movement in Hereford.

The year ends with our traditional Christmas lunch.

If you would like to know more about joining the WI we will be at the Gift and Produce Fair in the village hall on 10th December or contact one of the WI committee.

We would all like to wish everyone in the village a very peaceful and Merry Christmas and Happy New Year.

Rita Kirby, Wendy Priday, Diane Lee and Helen Kirkham
The Eardisland WI Committee



The 'GADBRIDGE GRANADA' is a tongue in cheek cinema name when we run films in Weobley Village Hall, Gadbridge Road, Weobley.

NOTE: The date for this interesting event is Thursday 21st December and NOT 14th, which is on the poster.

Ed.



A successful number of fundraising events have been enjoyed in the Village Hall recently adding to our much-needed funds. We had a successful Taster Day supported by Community First, based on the results of our recent survey. This has led to our Monday Dance classes starting, Yoga sessions, further Crafting Days

and soon to start Singing and Zumba classes in the New Year.

As a result of this summer survey, we have also invested some of our fundraising efforts to purchase a large screen and projector and hope to be showing films in the New Year! We hope to join Flicks in the Sticks and offer the latest films for all ages.

We assisted the Craft Fair with hosting the café in the hall which was extremely busy and yielded good funds. We would like to give a huge thanks to all those who helped and made some delicious cakes for us to sell.

The beginning of November saw the village hall electrified once again for another well attended, fun quiz night. It was a great success that saw the room overflowing with hearty laughter. The next one is in February, look out for details.

The Oktoberfest was enjoyed by all who came along, unfortunately the numbers were very much down on last year, but it didn't stop the fun and the dancing that was hosted by Barbara Kay and enjoyed by many.

We plan to paint the interior of the village hall over the Christmas / New Year break so look out for a fresh new look and much needed upgrade.

We are a lively and enthusiastic group of people on the committee who are more than happy to provide fund-raising events to sustain our village hall, however we would very much welcome feedback on these events and welcome suggestions from the parish on what you would like offered. As always, we would love to welcome new members to the committee.

A huge thank you to everyone who comes and supports our events. I am pleased to say we raise much needed funds for the upkeep of the village hall. A full list of the activities available and what's coming up is displayed in the village hall and on all the village noticeboards.

We look forward to seeing you all soon,

Susie and team - EVHMC



Eardisland Christmas Lights

Saturday 9th December

Santa's Grotto from 4.30pm | Lights on 5pm

FREE EVENT - ALL WELCOME

Mulled Wine | Mince Pies | Carols

to thank you for your
support this year



Brought to the community by Eardisland Village Hall,
Eardisland Community Shop, Eardisland Church and the E-Team.



Join us at Eardisland
Village Hall for our

CHRISTMAS FOOD & GIFT FAIR

10th December 2023 | 10am - 4pm

£2 ENTRY

Mulled wine and mince pies available

Eardisland
Village Hall

Charity No 1108366

EARDISLAND COMMUNITY SHOP – PLASTIC FREE CHAMPION

We're pleased to announce that Eardisland Community Shop has been awarded a 'Plastic Free Champion Award' by the Plastic Free Communities organisation. To achieve this the shop identified all the single-use plastic it used and removed or replaced these three items:

- Plastic drinks bottles are no longer sold.
- Plastic soap packaging was replaced with plastic free soap bars.
- Some plastic food packaging was replaced with glass and card alternatives.

The shop is now moving on to looking at how to reduce the use of other single-use plastic items, including contacting suppliers to see if they can offer alternatives.



EARDISLAND ENVIRONMENTAL AND SUSTAINABILITY GROUP

The E&SG is a working group of the Parish Council. Anyone interested in making Eardisland a more sustainable parish is welcome to come along.

ADVISING THE PARISH COUNCIL

The group has recently been involved in advising the Parish Council on several items the council has to make decisions on. These include researching the most environmentally friendly options for memorial benches and play area fencing, siting of electric vehicle (EV) charging points for residents without off street parking, working with the Eardisland Village Hall Management Committee on making the village hall more energy efficient, and starting to calculate the carbon footprint of the Parish Council's activities.

PLASTIC FREE EARDISLAND

The E&SG group is the steering group of Plastic Free Eardisland
<https://plasticfree.org.uk/>.

It's great news that The Community Shop has been awarded it's Plastic Free Champion Award. We're hoping other Eardisland based groups, events and businesses will support this initiative. It's not about removing all plastic from our lives but reducing the use of avoidable single-use plastic.

Please get in touch if you would like help becoming Eardisland's next Plastic Free Champion.

What is involved?

It's a simple 4 step process, which we will support you in doing:

Step 1: Sign up

Step 2: Make a list of all the single use plastic in your business

Step 3: Start tackling the list with the easiest items first (you can include things you have already done)

Step 4: Once you've removed 3 items you can apply to be a plastic free champion

What's in it for the business?

Positive local publicity and increased footfall – customers notice these things.
Reducing pollution.

What sort of single use plastic might be removed?

Takeaway food containers / cutlery / plastic drinks cups / bottles. Condiment or toiletry sachets, carrier bags and packaging. Balloons and plastic bunting.

How to get involved?

Just get in touch and we can arrange to help you get signed up and start the process.

Ben Woodcock
b3nwoodcock@gmail.com 01544 388976

EARDISLAND SHOP COMMITTEE NEWS

Your Community Shop AGM was held on Wednesday 8th November. We would like to thank the parishioners who attended. We realise that a rainy night in November is not a good time to hold an AGM so next year we are aiming to bring it forward to September.

Our Christmas opening hours:

Closed Christmas Day Monday

Closed Boxing Day Tuesday

Open Wednesday, Thursday, Friday, Saturday and Sunday, closing at 10.30am.

Monday New Year closed.

Tuesday 2nd Jan- 9.00 am to 1.00pm as usual.

As ever we need more volunteers. At the moment we only have 15 volunteers out of a parish of several hundred residents*. Just 6 more would make all the difference. It is particularly critical when any of our valued team experience health issues which leaves us with no back up. Please think about giving just an hour of your time now and then. There is very little to learn and the volunteers we have all find it a rewarding experience which gives them the opportunity to meet fellow parishioners and enjoy a chat.

The drinking tap has been closed down until March to avoid bursts in winter weather.

We are continuing to stock the very popular fudge provided by Happy Fudge, Leominster and have placed our Christmas order. There will be attractive boxes for sale which would make lovely Christmas gifts.

There is also a new line in luxury fruit cakes at a very reasonable price.

Happy Christmas to all Eardisland parishioners from the Community Shop Committee.

Eardisland Community Shop Committee

*The published population for Eardisland Parish from the 2021 census shows 245 residents aged 18 - 64, 166 aged 65+, and 74 residents aged 0 – 19.

Ed.

THE MORTIMER MEDICAL PRACTICE PATIENT PARTICIPATION GROUP (PPG)

A Dispensing Automation System is to be trialled at Kingsland Surgery. This will NOT replace the dispensary at Kingsland. The aim is that the machine will have 24-hour, 7 day a week access including Bank Holidays. This will enable patients to collect their prescriptions at a time convenient to them and hopefully reduce the wait outside the dispensary. One kilo of bagged medication can be loaded for a single patient into the automated box.

The medication is scanned and the access code to collect the medication is sent via a mobile phone to the patient. The code then needs to be entered into the touchpad (rather like ATMs at banks) and the medication will be released. If payment is required, this would need to be set up. Controlled drugs morphine, for example, will not be loaded into the machine.

Mobile phone reception will be needed, and the Practice is aware this could be a problem for some network providers. The Practice is looking for other options. 72 hours' notice to order prescriptions will still apply. This system will be an opt IN only and will not suit all patients. The Practice would welcome any comments/concerns on this proposal so please contact me if you have any which I will pass on to them - contact number below.

Dr Bray, GP trainee, has now left to continue her training. Dr Lewis, the next GP trainee, will be joining later this year.

All 3 surgeries and dispensaries will be closed for training from 12 noon to 8.30 a.m. the following day on these dates; Thursday 18th January 2024, Tuesday 16th April 2024, Wednesday 17th July 2024 and Thursday 17th October 2024.

Reception staff will be fielding all calls until 6.30 pm on those days and as normal the Practice transfers to 111 after that time. The Practice wants to thank patients for their support during these closures.

More pre-bookable after 5pm appointments have been released for seeing GPs and Physician Associate. Please contact reception at the practice if needed. From 11th May 2023 until 12th October, 29,086 appointments were offered but unfortunately of that number 804 patients did not attend. Based on a 10-minute appointment, this is 134 hours appointment time lost. This is equivalent to the loss of 22 afternoon surgeries.

Next PPG meeting will be 25th January 2024. If anyone has any concerns or questions they would like asked or answered (anonymously) please contact me.

Diane Lee
01544 387685

French Cheese and Wine Evening: Saturday 9th September 2023



The event was not quite sold out this time, but nonetheless, with great support from 68 ticketholders, the Hall was filled with friends from the village, from Arrow Bank Holiday Park and from further afield. The “ambiance” was very French and great fun – on one of the hottest days of the year!

Thanks to the support of everyone who came, and to many other residents and local businesses, a net profit of £819.88 was raised. This boosts the funds in the ETA account to £1298.82. These funds will go a long way towards entertaining our friends from La Vieille Lyre on any future visit.

In addition to kind contributions from private individuals, local businesses were equally generous.

Lee’s Cheese from the Friday market in Leominster provided the bulk of the cheese at a tremendous discount (please see his ad in this Magazine on p.33). I would very much encourage you to go and see him on the market. Lee has an excellent range of other local produce in addition to his interesting selection of cheese – all of excellent quality and at good value. Sainsbury’s in Ludlow and Tyrrells Crisps also provided generous sponsorship/donations for other food items in the spread.

For the raffle (which raised £198) there were enticing prizes from many local friends and also from Eardisland Community Shop, The Cross Inn, Rita’s Tea Rooms, The White Swan and The Buttercup Café in Leominster. Many warm thanks to all these businesses and to local friends.

Alongside a donation from a private cellar of a bottle of fine, classic claret, local businesses also provided other extremely attractive lots for the auction, raising £256. Here, grateful thanks are extended to Arrow Bank Holiday Park, 27 Drapers Lane Delicatessen and Renaissance Hair and Beauty.

No plans are currently in hand for imminent Association visits to or from La Vieille Lyre, but if you would like to express interest in these, please contact me. Thank you.

Ruth Brinton-Bivand
Chair, Eardisland Twinning Association
01544 388375/07773 706147
ruthbrintonbivand@gmail.com



EARDISLAND NEIGHBOURHOOD WATCH

There are some parts of the Parish that are not yet represented in our membership so please consider joining us. If you are interested in joining this scheme, you will need to become a member and then join the Eardisland scheme using the following link: <https://members.ourwatchmember.org.uk/join> to register by providing your personal details. Once you have done that and you are in your account, select the 'Manage Schemes' option in the 'dropdown' under 'Neighbourhood Watch Tools' in the top banner on the page, then click on the yellow 'JOIN OR APPLY TO CREATE A NEW SCHEME' bar and follow the process, selecting Eardisland to join this scheme and gain access to regular security hints as well as discounted security equipment and home insurance.

If you have any questions on membership please get in touch, or if you don't want to join online, give me a call with your name, address and contact details and I can complete the membership process on your behalf.

Joe Logan

Westgate, Eardisland HR6 9AR, Phone: 01544 388878

Email: eardisland_neighbourhood_watch@hotmail.com (please note the 2 underscores)

EARDISLAND MEMORIAL WALKS

A good number of people gathered at our War Memorial on Remembrance Sunday, demonstrating the sentiments of villagers and visitors alike. Across the country it appears likewise: people do still care. For new readers interested in Eardisland, our Fallens' obituaries can be read in respective brochure guides, with information about their mostly short lives, where they lived in the parish and when they went to war.

A letter written home by a Herefordshire Regiment soldier in the Sinai desert, partly copied in our brochure, describes his dream about our profuse 'meadows splashed with dazzling yellow buttercups so soothing to the eye'... no doubt familiar with many men serving alongside him. Perhaps our soldier returned to stroll in his remembered idyll and maybe some wildflower meadows remain. Happily, we retain those historic rights of access, freely treading upon the paths and lanes used by our young men before the War, and everybody since wherever the law provides.

George Roberts was one of our village's young men when war was declared. He was the second son, one of the six children of Thomas and Edith Roberts of Church Cottage, Eardisland (now called Westway). All the Roberts children were educated in the village school. It's quite likely that he would have used many of the footpaths in the village and wider parish, to include at least part of his now dedicated Memorial Walk.

In 1914, George worked as a farm worker in the tradition of his father. He joined the Guards Regiment in September of that year and upon completion of his training at the Guards Depot, George joined the 4th Battalion of the Grenadier Guards. This was a new Guards' unit which had to wait in Great Britain before sailing to France. George became seriously ill at some stage in early June and was consequently admitted to the Queen Alexandra's Military Hospital in Millbank, London.

George died of paratyphoid fever on the 5th of July 1915. He lies at rest in our churchyard to the south side of St Mary's churchyard. Stop by if you want a quiet minute.



A Memorial Gate, commemorated by a descendent of George's family, has been in place at the top of Burton Lane since 2018. His Memorial Walk begins and finishes at our War Memorial, the route describing a figure of 8 (more or less) and about 3 miles long; out to Lower Burton and back passing Burton Court, then over the fields to Patslie Coppice and on to the village via the church. New 'easy' gates and an easy-to-cross stile have replaced old and risky obstacles. Our objective is to enable less abled walkers to enjoy the benefits of Eardisland's remaining Public Rights of Way. More work is to be

done.

George's Walk can be both pleasant and interesting, and perhaps around this time of year will encourage some sentiments of Remembrance. Underfoot conditions on both sides of Burton Lane are best approached wearing boots due to mud, but with a frosty winter the going becomes easier.

So, please enjoy George's and other Eardisland Memorial Walks this winter season. Brochures are available in the Shop, Cross Inn and White Swan. Please take a few seconds on your walk to remember our lads; and read off their names inscribed on our War Memorial.

Should there be interest in this piece, or if you would enjoy volunteering to help in any way - or could provide information about any of our Fallen - please get in touch via contact@eardislandmemorialwalks.org

Hugh Vernon

CHURCH MATTERS

All are most welcome to services and will find a friendly and caring community. Come along and find out more; contact us too, if you are interested.

If you would like to volunteer to read a lesson, lead prayers, become a welcomer, sing, play, look after the church in any way or choose a hymn for a special occasion, please let us know.

| | |
|-----------------------|--|
| Priest-in-Charge: | Rev. Julie Read, The Rectory, Kingsland. 07826 194400 01568 708255 rev.julie@mortimerscrosschurches.co.uk |
| Curate | Rev Rosie Roberts tba revd.rosie@mortimerscrosschurches.co.uk |
| Reader | Rosie Capon: 07811 436412 |
| Churchwarden/Organist | Annette Blyth 01544 388241 |
| Deputy Churchwarden | Dian Cope 01544 388317 |
| Treasurer: | Mike Coleburn 01544 388486 |
| PCC Secretary: | Avis Denny 01568 780874 |

Services at St Mary the Virgin, Eardisland and in the Benefice

| Date | Time and type | Which church? |
|-----------------------------|--|---------------|
| Sunday 3 rd Dec | 3pm Advent Angel Service | Eardisland |
| Sunday 10 th Dec | 9.30am iSingPoP | Eardisland |
| Sunday 17 th Dec | 5pm Carol Service and seasonal refreshments | Eardisland |
| Sunday 24 th Dec | 10pm Christmas Eve Holy Communion | Eardisland |
| Monday 25 th Dec | 9.30am Christmas Morning Family Communion | Eardisland |
| Sunday 31 st Dec | 10.30am Benefice Holy Communion | Eardisland |
| Sunday 7 th Jan | 9.30am Holy Communion | Eardisland |
| Sunday 14 th Jan | 9.30am iSingPOP | Eardisland |
| Sunday 21 st Jan | 9.30am Holy Communion | Eardisland |
| Sunday 28 th Jan | 9.30am Holy Communion | Eardisland |
| Sunday 4 th Feb | 9.30am Holy Communion | Eardisland |

FROM REV. JULIE READ

The angels at the birth of Jesus sang **Glory to God in the highest and peace to his people on earth**. Isn't that a message we need to hear at the moment, and especially in the place where the angels sang that message. Bethlehem lies in the West Bank occupied by the Palestinians (not under the control of Hamas) and Jerusalem in Israel. The whole area is home to Christians, Jews and Muslims and these are all faiths that come out of the history recorded in Genesis 12 onwards in the Old Testament – from the family of Abraham, Isaac and Jacob. My prayer for all men, women and children in this area is for peace, is for hope, is for help to be found, is for a lasting agreement that all may live in safety, loving their neighbours. What is your prayer?

Eardisland Church will be home to an Advent Angel Festival from 3rd December to 6th January, and the church will be full of angels, with their stories and messages.

Very Reverend Michael Tavinor (previous dean of Hereford Cathedral) will be coming on Wednesday 6th December to talk about Angels at 6.30pm and for a cost of £5 there will even be a glass of wine.

Come and hear the story of the birth of Jesus – into a situation of Roman Rule and the longing for a Messiah to come along and save the people from foreign rule and domination. Hear the good news he brought to them and to us. Come and share in the reason for the season.

On the twelfth day of Christmas my true love said to me..... put your Christmas decorations away. On twelfth night this year 6th January 2024, I and a group of musicians from across the group of parishes are putting on a concert – sacred and profane at Aymestrey Parish Hall. There will be singing and light Christmas refreshments, a bar and good company. This concert we put on at this time of year is always well attended and we would like you to get your tickets so you can join in the fun, including a wassail with the apple tree in the car park that was planted in memory of Ken Holland, whom many of you will have known. This event raises money for our administrator who works 2 hours each week for our parishes.

Every blessing this Advent and Christmas

Julie

CHRISTMAS TREE

The Christmas Tree will be up and ready to decorate on Saturday 2nd December, starting at 10.30am. There will be the usual hot chocolate and treats for those who come along for the usual excitement of sorting the box of decorations. I secretly think the mums are just as excited as the children!

Dian

ADVENT ANGEL FESTIVAL

This opens with a very special service at 3pm on Advent Sunday (3rd Dec) where we be celebrating angels as Messengers of God, singing 'angel' hymns and enjoying some angelic refreshments afterwards.

The festival lasts until Epiphany (6th January) and is open in the church daily from 10am – 4pm. Please do visit it – see how many angels you can count! Find out more about angels and enjoy the lovely atmosphere and wonderful sight. Spread the word to friends, family and neighbours for an uplifting but gentle time in the midst of all the busyness of this time of year. Entrance is free, but we would appreciate a donation if you are able, please.

The Christmas tree will be up and there will be an opportunity to write and hang a 'memory angel'. We know that this season can be very difficult if you have lost someone special, especially if this is the first Christmas without them, so you may find comfort in knowing that their memory will be treasured during the season.

Wednesday 6th December 6.30pm – 8pm The former dean of Hereford Cathedral, the Very Rev Michael Tavinor will be talking about Angels as Messengers of God. Tickets will cost £5 and include a glass of wine. He is a most knowledgeable speaker and we know that it will be a very interesting evening. Tickets available from Annette 388241 or Dian 388317 or see the poster at the shop for details.

Angel ISingPoP takes place on Sunday 10th December at 9.30am for families and those who enjoy a lively service.

We hope to knit 150 small angels which will be on display during the festival; they are then going to be gifted to all the children at Kingsland School in the new term.

CHRISTMAS CANDLELIT CAROL SERVICE 5PM, SUNDAY 17TH DECEMBER

Come and sing some favourite carols, listen to the Christmas story, watch the children dress the beautiful crib and enjoy the candlelight. Our small wooden candleholders were especially made for us by one of our congregation, Bill Manzoni. Bill was Lindy Connop's father and grandfather of Pete. So every time I open the box in preparation for the service, my mind fills with memories of dear Bill and June and how they were such wonderful welcoming people when we first moved to the village. And more refreshments afterwards ...

Also, a special memory is the early daffodils planted round the base of the tower by Derek Wareham; they are normally peeping out by the 'midnight' 10pm service on Christmas Eve – unless we have had really crazy temperatures!

TRAVELLING CRIB

Before Covid, we had a travelling crib, containing the Holy Family and all the people who came to worship baby Jesus. So this year Mavis has taken it out from its special box again and we would like as many people as possible to take turns as 'host' for a night during Advent.

There will be a list of dates in the church and you can come and sign up for whichever night in Advent you would like; the crib will be given to the first 'home' at the Advent Angel Service on Sunday 3rd at 3pm, and will travel each teatime to the next home. Whoever has it on Christmas Eve must be able to bring it to the Christmas morning service!

CHRISTMAS WISHES

As we are becoming a 'greener' village, instead of writing Christmas cards to all your village friends - and to save paper and card - we would like to invite you to display your seasonal good wishes in the church. Just a piece of paper/card, decorated if you wish, with your greeting and first name/s written (legibly!) and we will provide a space to put it. In lieu of the cost of cards, you could kindly make a donation to the church or your favourite charity.

I've just seen a poster saying 'Jesus is the reason for the season'!

Annette Blyth
Church Warden

ST MICHAEL'S BECOMES FIRST HOSPICE IN THE UK TO BE AWARDED CENTRE OF EXCELLENCE FOR MINDFULNESS

St Michael's Hospice in Hereford has become the first Hospice in the UK to be awarded a Centre of Excellence for Mindfulness.

The prestigious award comes from the Mindfulness organisation and charity, Breathworks, a global body which has been training Mindfulness teachers for over 20 years.

Mindfulness is a practice of bringing attention to the present moment, and learning to not be overwhelmed by the world around us. Over the years, Mindfulness has benefitted patients, their loved ones, staff and volunteers at St Michael's, which provides palliative and end-of-life care to those in Herefordshire and the Borders.



How fortunate were we to be blessed with such good weather? The sun was shining, and the ground relatively firm after several days of rain, making perfect conditions for this popular annual event.

Many stallholders took advantage of an invitation to set up their stalls the day before, but even so the church grounds were busy from 07.30 on the day itself, with gazebos being erected, stock busily being displayed and old friends exchanging greetings.

By the opening at 10am, the public was arriving in their dozens. The barbecue was ready with bacon rolls eagerly snapped up. By 10.30am stewards involved in car parking on the recreation ground were struggling to find space for those arriving, although somehow, they managed to squeeze everyone in. By 11am the event was thronged with a mass of people, delighted stallholders reporting excellent sales. The village hall was packed, with people enjoying a cuppa and a slice of generously donated homemade cake. The committee room was the new home for Wendy Cross's mouthwatering produce, which was once again a winner.

This year saw the event expanded slightly, to include more gazebos, taking the total number of stalls to 55. Without exaggeration the demand for stalls was so high we could have filled the same space twice over.

A show of this type relies so much on those volunteering to help, so a huge thank you to the dozens who helped in so many roles, including erecting and dismantling the marquee, moving furniture, making and placing advertising boards, selling admission tickets, raffle tickets, barbecuing food, parking cars, making drinks, serving cakes, washing up, collecting monies and assisting stallholders to load and unload their vehicles.

Finally, the figures. Ticket sales were 603, a handful down on 2022, but profit was up, to £4,588.29. In accordance with the agreement in place when this event started 2016, the profit is equally divided between St. Mary's church and Eardisland in Bloom, however the In Bloom team has again agreed to share its half with Eardisland Village Hall.

Once again thank you for your support.

Phil Milchard
Picture: Phil Milchard

EARDISLAND IN BLOOM

Despite the vagaries of the weather this year the E team has continued its efforts to keep the public areas of the village looking at their best. In addition to helping organise the Craft Fair (see above), the border opposite the Swan has been re-worked to take account of the unfavourable conditions under the adjacent tree and will be planted with more appropriate plants similar to the car park garden next season. Weeding and dead heading continues along the borders, a few new pansies will add a bit of winter colour and there are more bulbs still to be planted before the frost arrives. Comments from many visitors throughout the year are a testament to their enjoyment of our beautiful village.

David Millin
For and on behalf of Eardisland in Bloom

EARDISLAND WEATHER REPORT




The weather in Eardisland was kind to us up until the 12th September and then the rain came with 68mm (2.67inches) recorded for the rest of the month with hurricanes Nigel and Lee bringing 22mm (0.866 inches) of rain on the 20th also with

little rain but with wind was storm Agnes on the 27th. Temperatures ranged from 16°C to 30°C and river levels from 13 to 28 inches.

October in Eardisland had increased amounts of rain with 152mm 5.98 inches recorded. Temperatures ranged from 10°C to 22°C with the barometer needle swinging wildly from 28.7 to 30.2, mainly due to storm Babet on the 19th. The river rose from 13 inches to 60 inches. The first frost was recorded on the 15th.

The equivalent rainfall in 2022 was September 94mm (3.70 Inches) and October 134 mm (5.27inches).

Doug Tantrum reporting from Kingfisher House




MEN & MATWORK

4 Week Course
£30


Focus on
Strength and Flexibility

EARDISLAND
VILLAGE
HALL

Tuesday Jan 16th, 23rd,
30th. Feb 6th
12.00 - 12.45pm



Book with Barbara
07837 420152
01544 388697
fitcats@btinternet.com



Made with PosterMyWall.com

Hereford Memorials

**Suppliers of quality memorials,
additional inscriptions, renovations &
plaques**

Reasonably priced

**Units 4 & 5 Beech Business Park
Tillington Road
Hereford
HR4 9QJ
Tel 01432 639999**

Email herefordmemorials@outlook.com





NEED ANY HELP WITH SMALL JOBS?

Army Veteran recently retired who is honest, hard working reliable and **affordable**.

Very happy to help with any small jobs inside and out including putting up pictures, shelving, curtains, redecorating, hedge cutting, mowing lawns etc

Please contact Simon on 07846 259549



MADE TO MEASURE CURTAINS AND BLINDS

30 years experience in making beautiful handmade window treatments. Anything from simple unlined curtains, to Roman blinds, to sumptuous interlined curtains and pelmets.

Free measuring service offered and plenty of advice on hand to help you make the right choice with fabrics and design!

Very competitive rates. References and portfolio available.

Call me today. No obligation.

Jean 01544 388619
 07796 850795

MATHS TUITION FOR AGES 8 TO 14 YEARS

Arithmetic and GCSE Topics

30mins £20

60mins £30

Contact: JackyDiane Aldridge BSc

Email: mathematics-tuition@hotmail.com

LEOMINSTER OSTEOPATHS

a multi-disciplinary clinic, passionate about caring



| | | |
|---|---|--|
| <p>Reduce Pain Restore Health</p> <ul style="list-style-type: none"> ✓ Back, neck & body pain experts ✓ Our osteopaths have been treating people with chronic pain & acute injuries since 1989 | <p>Hearing Health Clinic</p> <ul style="list-style-type: none"> ✓ FREE Hearing Health Assessments ✓ Gold Standard earwax removal ✓ Extensive range of hearing solutions | <p>Holistic Massage Therapy</p> <ul style="list-style-type: none"> ✓ A tailored therapy that treats the individual as a whole ✓ Promotes physical and psychological wellbeing |
| <p>Nutritional Therapy</p> <ul style="list-style-type: none"> ✓ Transform your future health with the power of nutrition ✓ Tailored support programmes <p>Book a FREE Nutrition consultation to learn more</p> | <p>Foot Health Services</p> <ul style="list-style-type: none"> ✓ Caring, experienced Foot Health Practitioner ✓ Foot and toenail treatments for optimal foot health | <p>Spinal Decompression (IDD) Therapy</p> <ul style="list-style-type: none"> ✓ Targeted treatment protocol for persistent sciatica, back, neck or leg pain ✓ FREE spine check consultations |



THE OSTEOPATHS
LEOMINSTER | MARTLEY

Find us next to the Co-op car park in Leominster

TALK TO US

01568 610610

enquiries@leominsterosteopaths.co.uk

www.osteopathicclinic.co.uk

www.bill-jackson.co.uk

Local People - Expert Knowledge - National Marketing



Sales
Lettings
Auctions
Commercials
Land & New Homes

jackson property

Hereford - Leominster -- Mayfair

Proud supporters of  **The Cart Shed** charity

Leominster | 01568 610 600

Hereford | 01432 344 779



Fern Landscapes & Construction

Design Create Maintain



With over 35 years' experience in horticulture. From maintaining through to designing your perfect garden.

Contact Mike James on 07813111543

Email: mjames100@hotmail.co.uk

website: www.fern-landscapes.co.uk



Hereford Centre For Natural Health

THE Centre in Hereford for Complementary Therapies

18 different therapies provided by
highly trained and experienced staff.

The Very Best Help for Your Health

Eastholme Avenue, Belmont, HR2 7XT

Hereford Tel: **01432 279 653**

www.herefordcentrefornaturalhealth.com

Foot Health Practitioner



Treatment for :

- Painful Corns and calluses
- Ingrown toenails
- Verrucae
- Diabetic foot care
- Nails trimmed/ reduced
- Plus other skin/nail complaints



Home visits only

Member of The British Association of
Foot Health Professionals

HEATHER FOOT HEALTH

Heather Hannant MCFHP MAFHP

01568 760839

07966 136491



www.herefordoakbuildings.co.uk

TRADITIONAL OAK BUILDINGS

GARAGES • EXTENSIONS • CARPORTS
MORNING ROOMS • PORCHES

WE ALSO MANUFACTURE BESPOKE JOINERY

DOORS • WINDOWS
STAIRCASES • GATES • BOOKCASES

01568 720266 / 07966 535737

Monkland Leominster HR6 9DF



Original Furniture

Designers and makers of
quality furniture and joinery.

Experienced in design and making
furniture for both residential and
commercial settings.

Commissions include individual pieces,
bespoke kitchens and more.

We also repair and revive older quality
furniture.

Contact us for more information.

p: 07973 859756

w: dtbo.co.uk e: steve@dtbo.co.uk

Herefordshire's friendliest live-in care provider.



Live-in Care | Respite | Companionship

We are very proud of our company culture. We are positive and open minded, we find solutions, and we live by our principles. We are very proud that it has won us an 'Outstanding for Caring' rating by CQC.

www.kembleathome.co.uk

01432 382017 | enquiries@kembleathome.co.uk

Sigeric Business Park | Holme Lacy Road | Hereford HR2 6BQ

FIREWOOD FOR SALE

100% Hardwood Logs

Air dried

All sourced from our farm

Local delivery available

01544 388217

07930 867362

Hardwick Farm

hardwickfarm@icloud.com

DAVE NEWTON

AND SONS

HOME AND GARDEN MAINTENANCE

Gardening throughout the year, including
pruning, hedging, fencing, paving and
grass cutting.

Home: 01568 647048 Mobile: 07771 870210

Timberworld Products Limited

MANUFACTURERS OF QUALITY TIMBER BUILDINGS



**Garages · Carports · Stables · Field shelters · Sheds
Workshops · Offices · Summerhouses · Gazebos
Pergola · Club houses · Dog kennels and log stores**

www.timberworldproducts.com

Tel: 01568 708549

LEE'S CHEESE

Every Friday in Leominster Market

- Cheeses from England, Wales, France, Germany, Switzerland, Holland.
- Free range eggs (local).
- Scotch eggs from the Black Country.
- Cold meats, cured meats (international, European).
- Pork pies/gala pies, from T.C. Morris in Willenhall.
- Bakery products from Lamings Bakery in Bromyard.

Lee Humphreys

07724 067138

leehumphreys@live.com

**SHORT OF SPACE, MOVING HOUSE,
BUSINESS EXPANDING – DON'T WORRY!!**



**There is a modern secure internal
Self-Storage facility at Hardwick Farm
just off the A44**

- Accessible 24/7 with electronic fob key
- 11 CCTV cameras and fully monitored alarm system
- Suitable for document storage to comply with GDPR
- Storage for motorbikes, cars and caravans also available

Prices fixed for 2 years - guaranteed

www.barn-store.co.uk/pembridge

01544 388217



M D R ELECTRICAL

Mark D Ridge (Proprietor)

NICEIC Registered

ALL ASPECTS OF ELECTRICAL WORK UNDERTAKEN



EV CHARGING POINT INSTALLATIONS

Showers, Fuseboard upgrades, Extra sockets, Lights,
Security lights supplied & fitted.

Power supplies to garages and outbuildings.

Full/Part Rewires, New builds & Conversions.

Condition reports/Landlord certificates, PAT Testing.



PUBLIC LIABILITY & PROFESSIONAL INDEMNITY INSURANCE COVER

Call MARK: 07760 433479 OR 01544 327161

or email: mdrelectrical330@gmail.com

CONTACTS

Editorial: CHRIS BIVAND
Arrow Bank, Eardisland, Leominster, HR6 9BT
☎ 01544 – 388375
Email: chrisbivand@gmail.com

Advertising: PATRICIA GILL
☎ 01544 – 388757
Email: parishads@btinternet.com

Distribution Manager: BARRY FREEMAN
☎ 01544 - 388226

Website: BEN WOODCOCK
Email: ben@eardisland.org.uk

Printed by PIP Printing, Hereford
© Published and copyright: Eardisland Parish Council 2023

Views expressed are those of individual contributors and not necessarily those of Eardisland Parish Council. The Eardisland Parish Magazine is published by Eardisland Parish Council without inserts. The Parish Council's magazine contact is Cllr. Richard Davies. The Eardisland Parish Magazine is posted online in pdf format on the village website: www.eardisland.org.uk.

Under the General Data Protection Regulation (GDPR) individuals must give positive consent for their personal data to be held and published. Both the Parish Council and the Community Website have a responsibility to comply with the GDPR. Therefore, by actively submitting an article for publication in the parish magazine, you are giving positive ongoing consent for your data to be held and published in the magazine in paper and online format. Please contact the magazine editor if this is not acceptable to you.

Copy date for the next edition of the Eardisland Parish Magazine:

FRIDAY 5th JANUARY 2024



The greatly successful Craft and Produce Fair (see page 22) was, in part, held in Eardisland's church, St Mary the Virgin. This annual event has gained a following well outside the immediate parish and is a great credit to all those involved in its organisation.

It might surprise those new to the village that the church is almost certainly the oldest building in the village, dating from around the end of the 12th century. Of course, it has changed much over the intervening centuries. It was 'Victorianised' in 1864/5, at an estimated cost of £1700 - £2000, paid by public subscription. This is very approximately £330,000 in today's terms – a great deal from a relatively poor community.

It is important to note that churches in earlier terms served essentially two functions; religious rituals and social life. The first is obvious, it would have been a Catholic church before the reformation, but it was always a religious symbol. The 'social' life of the church might be paralleled by what now happens in the Village Hall, a space for plays, fairs and the needs of the community.

How wonderful that some of the original uses of this fine building are reflected in our modern and very different lives, witness the Craft and Produce Fair.