

EARDISLAND PARISH MAGAZINE

SEPTEMBER 2023

ISSUE 196



The popular and well-supported Eardisland Duck Races

Sunday 27th August 2023

This year, the Duck Masters were Reg Curtis and Gavin Evans. The Duck Starters were Phil Milchard and Sandy Ross

The event was lucky with the weather, in an otherwise very variable period, with periods of heavy rain and high wind. Anyway, all was well, and a good time had.

In this issue:

Index/Editorial	2	Remembrance Wreaths	15
Parish Diary	3	FMMP/Weather	16
Marie Davies	4	Neighbourhood Watch	17
Suzy-Jean Jarman	5	EE&SG	18
Sheila Kruft	6	Email request	19
Parish Council	7	Church Matters	21
Community Shop	9	C17th Nun's Prayer	24
EVHMC	10	Coffee Morning	25
Eardisland Village Show	11	Eardisland in Bloom	25
Craft & Produce Fair	12/26	Telephone Services	26
Oktoberfest	13	Eardisland History	28
Quiz Night	14	Contacts	39

EDITORIAL

It is with sadness that I have three obituaries in this edition, those of: Marie Davies, Suzy-Jean Jarman and Sheila Kruft. Our condolences go to family and friends.

With this magazine you should receive a copy of 'Who's Who and Organisations'. This is a considerable undertaking and very time-consuming. I am very grateful to Patricia for undertaking this onerous task and ensuring the information is accurate and up to date. Inevitably, through the course of the year, changes will occur, and I would be very grateful if you could let me know so that any alterations can be published in the magazine. The directory is usually compiled once a year, delayed this year because of elections. We will wait to see if it is necessary to publish an amended version in 2024.

As we head into the winter period the risk of flooding in the village increases, although it is important to realise that floods can happen at any time of year. Extensive work was undertaken to develop an Eardisland Response Flood Plan. Part of this assigns a volunteer Flood Warden to each part of the village. Richard Davies, for example, is the warden for Arrow Bank and immediate properties. If you are in danger of flooding, it would be wise to find out who your warden is. If you don't know already, please contact me and I can let you have a copy of the Plan by email, or just your warden by phone – see 'Contacts' on page 39. The quick advice is simple, assume you will flood and have a plan, including the possibility that you have no electricity.

Finally, don't forget that ULEZ areas are now in force within the M25, including Heathrow, and cities such as Bristol, Bath and Birmingham.

Chris Bivand

EARDISLAND PARISH DIARY 2023

Thursday 14 th September	Parish Council Meeting
Thursday 14 th September	Patient Participation Meeting
Thursday 5 th October	Coffee Morning, p.25
Saturday 7 th October	Craft and Produce Fair, p 12 & 26
Thursday 12 th October	Parish Council Meeting
Tuesday 17 th October	FMMP, p.16
Saturday 28 th October	VH Octoberfest, p.13
Thursday 9 th November	Parish Council Meeting
Friday 10 th November	VH Quiz Night, p.14
Sunday 12 th November	Remembrance Sunday, p.15
Friday 17th November	Magazine Copy Date
Sunday 10 th December	VH Christmas Food and Gift Fair
Thursday 14 th December	Parish Council Meeting (if required)

COPY AND PUBLICATION DATES 2024

Copy Date	Probable Distribution Date
Friday 5 th January	Friday 19 th January
Friday 1 st March	Friday 15 th March
Friday 3 rd May	Friday 17 th May
Friday 5 th July	Friday 19 th July
Friday 6 th September	Friday 20 th September
Friday 15 th November	Friday 29 th November

The second set of dates above have been agreed by the Parish Council and will be incorporated into the main diary in the November edition of this magazine.

As always, I would like to remind organisers of events that the distribution date cannot be guaranteed because we are in the hands of the printers – if they are busy, then the distribution date will be pushed back. It is better to play safe and notify events in good time, rather than take a chance and find that the notification is read after the event has taken place.

As a general comment, I never cease to be impressed by the quality and range of events that Eardislanders manage to provide. In addition, there are more which are private and don't appear in the diary. A glance at other magazines for villages of a comparable size will show you that our small community is doing extremely well for community spirit.

MARIE CHRISTINA DAVIES

d. Saturday 1st July 2023



Marie, who was known to all as Binky, was born in 1936 at Culmington where she lived in the family home Paytoe Cottage. Her first work was for Mr and Mrs Plant on a farm in Walford (Leintwardine) where she was working in the house and on the farm. She then went on to work in a glove factory in Leominster where they made gloves with rabbits' fur (allowed in those days). It was a long day leaving Adforton at 8am on the bus and not returning until 7 in the evening.

Whilst still living at home, she started working in the local school canteen at Leintwardine, supplying all the schools in the area. When Wigmore

High School opened in the early 1960s, she was in charge. Soon after this she met Mike, and they ran the Garage and Post Office in Eardisland. Sadly, Mike was killed in a car accident near Dilwyn, and the property had to be sold, so Binky went to live with Mr Karlsson in Kingsland. And then she moved to Keelcroft, Eardisland, where she worked as a district nurse at Weobley Doctors' Surgery until she retired.

She enjoyed bowling and had many a trophy for competitions she took part in. One of her best friends was Rudi, her Westy dog.

Marie was known as a welcoming neighbour who, though very independent, would always invite you in for a chat, often about old times. She clearly loved living where she did and cherished her garden. She had an interest in the visiting wildlife. Whenever she was asked how she was, her stoic reply was always "Not bad for an oldun", even when, in later years, she clearly suffered a number of ailments!

Those are the facts of her life, and has painted for us the heart of her life, one of generosity of spirit to others, of fun and kindness, active to almost the end of her life, when her failing heart gave way.

Thanks to various contributors. Ed.



Suzy, Claire Speke's daughter, was born and grew up in Eardisland with her younger brother John. She went to Kingsland Primary School, then onto Weobley High School.

Having lived for a short time in Leominster, Suzy moved back to Eardisland, into St Mary's walk, with Dan and her boys Finley and Theo. Suzy had met Dan in 2011 and 3 years later they welcomed son Frankie in March 2014. Suzy and Dan married in June 2021 after having to postpone 4 times due to Covid. Suzy, Dan and the boys moved back to Leominster into "Apple Blossom", their dream

home where Suzy started her cake-making business "Apple Blossom Bakery".

Tragically, Suzy was diagnosed with bowel cancer in September 2021. She fought with bravery, courage, tears and even laughter. Indeed, she even did fund raising to support her treatment, which wasn't available in the NHS.

Suzy was admitted to St Michael's Hospice in May of this year, which she described as her 'Happy Place' due to the incredible care they took of her and all her family.

Sadly, Suzy lost her brave battle against Cancer on the 9th of July surrounded by her family.

As Suzy would say "please check your Poo 🐛"!

Dan is doing the St Michael's Hospice 26 mile walk on September 25th, also the Bath half marathon for the 'Bowel Movement' on October 25th. If anyone would like to give a donation it can be left with Claire Speke at Old Shop House.

Thanks to Cathy Dyer, friends and family. Ed.



Sheila was a daughter of Eardisland, often known as Ginny. Her father, George Cole, was the farm manager for the Lynch. He also helped build the bowling club.

Sheila was born on 25th August 1937, and died on 29th August 2023. She attended school in Eardisland and finally went on to study at Birmingham University.

She married Wim, at St Mary's Church in Eardisland.

She always returned to Eardisland to visit her mother Phyllis, father George and brother Colin who continued to live in the village.

She also was a lifelong friend of Arthur Greenough, from the Staick House, and knew many of the people who used to hang around there.

After the passing of her parents, she became an active member of the bowling club. After she became too old to partake, she continued to give her support to the team along with her daughter, Rachel, who still plays at the club.

There will be a service at Kidderminster crematorium and an internment at Eardisland at St Mary Church, where she will be together again with her husband, parents and brother.

She will be missed by many including her son Michael, daughter Rachel and four grandchildren.

Michael Krufft

The longer-term residents of Eardisland will remember the Colin referred to above. That is Colin Cole, a well-known local man who cycled around on a very old bike. He made violins and an example is on show in the Village Hall. The family lived off the lane to Lynch Court.

The last time I saw Sheila, she gave me £50 for the Eardisland Parish Magazine, which was passed to the publisher, Eardisland Parish Council. I sent Sheila a copy of each publication to her home at Rehill Farm, Bewdley. Her son told me that they were neatly kept in their entirety.

Ed.

PARISH COUNCIL

I am a few months into my new role, thank you for making me feel so welcome. I haven't had the opportunity to meet everyone yet, but I look forward to doing so.

1. The Parish Council would like to remind parishioners to maintain their frontages within the village. The wet weather has certainly made it hard for us and the Parish Council appreciate this is no easy task. Having said that, the Parish Council are viewing this from a safety perspective and ask that hedges are cut back and maintained, pathways and roadways are kept clear from loose gravel, overbearing trees and other shrubs.

2. ***Are you new to the parish; have you just moved in?***

If you have not already received a 'Welcome to Eardisland' pack, please contact the Parish Clerk and we will be pleased to bring you one.

3. The **Parish Council Website** can be accessed at eardisland-pc.gov.uk with the community website continuing to provide all other information at [Eardisland Community Website](#).

4. **Parish Council News Alert emails**

Keep up to date with news from the Parish Council by registering for news alert emails. Go to eardisland-pc.gov.uk, scroll down to the bottom of the page and complete your details in the space provided bottom left. This will enter you onto our "Mailchimp" email list. Emails are only sent out occasionally - we will not flood your inbox!

GDPR requires people to give positive consent for the Parish Council to hold personal data and to allow you to receive emails. Please contact the Clerk if you wish your name and data to be removed from the list for news alerts.

5. The following **Planning Applications** have been considered or noted at recent Parish Council meetings:

P231545/FH – 1 Lynch Cottages, Eardisland HR6 9BE – Proposed extensions and detached garage. Support in principle but there were concerns that it was not in keeping with a Conservation Area. It was felt that Conservation Officers at Herefordshire Council would need to consider the application carefully.

P231444/L – Staick House, Eardisland HR6 9BU– Proposed internal and external works to Listed Building (part retrospective). Support in principle provided consideration is made with the placement of heat pumps to ensure this does not become a nuisance to nearby neighbours.

P232059/PA4 - Barn at Legions Cross, Pembridge, Leominster, Herefordshire – Application to determine in prior approval is required for proposed change of use of an agricultural building to one smaller dwellinghouse (Use Class C3), and for building operations reasonably necessary for the conversion. It was suggested that screening would be helpful to stop head lights shining into the adjacent property.

P230306/L – The Manor House, Eardisland HR6 9BN – Proposed improvements and refurbishment of recreational building (for use as ancillary support facilities to the holiday let business), other operations to include new patio area, gate and fences. Support the application in principle but would like the barn style doors to be retained and the gate and fences to match the existing walls and gates at the property.

P230305/F – The Manor House, Eardisland HR6 9BN – Proposed improvements and refurbishment of recreational building (for use as ancillary support facilities to the holiday let business), other operations to include new patio area, gate and fences. Support the application in principle, but would like the barn style doors to be retained and the gate and fences to match the existing walls and gates at the property.

P231687/K - Toad Hall Eardisland Leominster Herefordshire HR6 9BE – Works to Trees in a Conservation Area – Ash Tree to be felled with the aid of ropes and lowering tree to be taken to ground level and grind out resulting stump. Determination Made – Works can proceed.

P231963/K - The Manor House Eardisland Leominster Herefordshire HR6 9BN - Works to Trees in a Conservation Area - On the property boundary that adjoins a neighbouring access private footpath is a self-set Goat Willow tree with an approximate height of 12 metres. The tree is now quite large and is not only overpowering The Manor garden but also casting dense shade and dominating a neighbour's small back garden. The application is to have the tree removed to ground level. Determination Made – Works can proceed.

6. **Parish Footpath Opportunity** - Do you enjoy walking the footpaths around the parish? Would you be interested in becoming a Parish Footpath Officer? The Parish Footpath Officer (PFO) monitors Public Rights of Way (PROW) within the parish; liaises with landowners to ensure the PROW are in a suitable and legal state; volunteers on behalf of Herefordshire Council; and liaises with the Parish Council. Ideally this role would be shared between 2 or 3 interested persons who would work together to keep our footpaths safe

and well signposted for residents and visitors alike. If you might be interested, please get in touch.

7. The planned Parish Council meeting dates can be found in the diary of the magazine. Extra meetings will be held if required to meet deadlines for response to planning applications and details can be found on the notice boards and website. Meetings are open to the public and a short time is allocated on the agenda to take questions or comments from parishioners, in line with the council's Standing Orders.

Amber Littleworth

You may note that The Manor House has two entries with two different reference numbers but identical text. I have checked with the Parish Clerk, and this is as notified by Herefordshire Council.

Ed.

COMMUNITY SHOP REPORT

We are sorry the shop was unable to stay open for the duck race on Bank Holiday Sunday. AS EVER IT WAS DUE TO A LACK OF VOLUNTEERS.

As members of the committee we were disappointed to have to take the decision to remain closed but we realised very few of us were available to cover the extra time and we already ask too much of our small band of volunteers.

Unfortunately, we have had very little response to our appeals for more volunteers. We are so grateful for the few we have

but we cannot keep putting on them and expecting them to do extra shifts. Your shop is run by unpaid parishioners giving their time to provide a valuable service to the village.

We would all be grateful if a few more of you would step forward to offer an hour of your time now and then. That way we could stay open for other events and be able to give them the full support of the shop. In the meantime we will continue to open each morning as usual for as long as we are able.

Eardisland Community Shop Committee



A successful number of Fundraising Events have been enjoyed in the Village Hall over the last few months. These have included our first Race Night in June, where villagers managed to have fun choosing their horses and cheering them on!

We were kept busy during May with the Village Coronation Celebrations which as you will recall were a great success. We would like to repeat a similar version of this weekend each year at the end of May as the Big Lunch and Raft Race (*photo left*) were both such great hits and enjoyed by so many in the parish. Watch out for details early next year and practicing your raft building skills.

July saw the Village Hall electrified with anticipation for another well attended, fun quiz night. It was a great success that saw the room overflowing with hearty laughter. Next one is in November, look out for details.

The annual Duck Race on August Bank Holiday was another success and although the weather was not as kind, we all managed to avoid the rain. All races were well supported and plenty of cheering was heard around the village. The tombola was a sell-out, much cake was eaten, and the new addition of the BBQ kept our tummies from rumbling!

We would like to thank everyone in the Parish that completed and returned the Questionnaire back to us allowing us to follow up on some of the events, services and activities that would be supported should we be able to provide them. We started by applying for an arts grant for a projector and screen and I am pleased to say we have been successful and will be looking to purchase this month. Hopefully we can add Film showings in the Hall for both adults and children to enjoy.

We are compiling another taster day with the aid of Community First on September the 16th starting at 10am. A list of the activities available to come along to will be on the noticeboards.

A huge thank you to everyone that comes and supports our events. I am pleased to say we raise much-needed funds for the upkeep of the village hall.

Please look out for our Future Events and Village Hall Activity Posters for what is coming up in the next few months.

We look forward to seeing you all soon,

Susie and team - EVHMC

EARDISLAND VILLAGE SHOW

A massive thank you to everyone who contributed to this year's Eardisland Village Show. There was a fantastic array of wonderful works of craftsmanship, delicious goodies and some superb examples of Horticulture. What a talented bunch!

Below are the winners of the much-coveted trophies....

Cookery	Jo South
Bread (men)	Chris Bivand
Bread (women)	Jo South
Drinks	Julie Tindale
Craft	Jo South
Floral Art	Susie Curtis
Les Evans prize	Mavis Tantrum and Susie Curtis, joint winners
Megan Lloyd trophy	Mavis Tantrum
Horticulture Div 1	Mavis Tantrum
Horticulture Div 2	Mavis Tantrum and Jo South, joint winners
Art	Kathleen Freeman
Photography	Jane Thorp
Children under 5	Ottillie Yapp
Children 5-11	Fleur Marfell
Children 12-15	Beau Marfell
Heaviest Pumpkin – Joint 1 st at 6.2kg	– South Family and The Children's Allotment
Best Limerick	Jo South
Overall Junior winner	Emily Thorp
Overall Show winner	Susie Curtis

Alongside the Show was our much-loved Fun Dog Show and the weather was perfect for us all to enjoy, dogs and owners alike. The Scurry was also popular, and the dogs all found this great fun. A selection of fun classes including waggiest tail and best trick were a delight to watch. The "Best in Show" was a sweet Bassett called Evie and the winner of the Scurry a golden Labrador called Pip. Thank you to Sam at Positive Dogs for judging again this year.

I would like to say a huge thank you to all those who helped on the day, your assistance was greatly appreciated.

We hope everyone enjoyed their day and we look forward to seeing you again next year. Thank you again for supporting the show!

Susie Curtis and the Village Show Team

Eardisland Craft **& Produce Fair**

Kindly sponsored by Lee Anderson Property

Saturday 7th October

10am – 4.00pm

50+ quality stalls

St. Mary's Church & Village Hall

Tea, coffee and cakes from 10am

Barbeque from 10am

Admission just £2 to include **a free hot drink**

Plenty of free parking available

Proceeds to Eardisland in Bloom, Eardisland PCC and Eardisland
Village Hall

OKTOBERFEST

Celebration



28TH OCTOBER

7PM - 11PM EARDISLAND VILLAGE HALL

BAR ♦ BEER ♦ FOOD ♦ MUSIC ♦ DANCING

TICKETS £6, INCLUDING A HOT DOG

**BAVARIAN COSTUMES
WELCOME, WITH A PRIZE
FOR BEST DRESSED!**

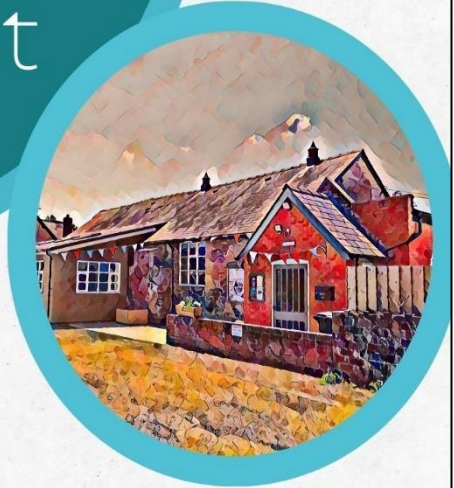


Tickets are available from
Eardisland Community Shop or
email susie.evhmc@yahoo.com

Eardisland
Village Hall

Charity No 1108366

Eardisland Village Hall Quiz Night



- ✓ Maximum team of 6
- ✓ Bar
- ✓ Refreshments provided



Friday 10th
November 2023



7.00pm



Eardisland
Village Hall

£2 ADMISSION, BOOKING RECOMMENDED

Email susie.evhmc@yahoo.com or
scan the QR code to book



Eardisland
Village Hall



REMEMBRANCE SUNDAY AND THE LAYING OF WREATHS

On Sunday 12th November the Nation will remember those who gave their lives in the service of our Country. The Community of Eardisland will, as is traditional, come together at the village War Memorial, on that morning, to remember family members, friends and those from the Armed Forces who gave their lives for us.

In Eardisland, a wreath will be laid on behalf of the Community by the Chair of the Parish Council and this year, for the first time, separate wreaths will be laid for the Royal Navy and the Army.

My question here is, is there any other organisation or individual from the Parish, who would like to lay a wreath as part of the ceremony on Sunday 12th? The provision of a suitable wreath can be arranged; there will inevitably be an associated cost. Please contact me if you would like to be involved.

Richard Kirby
rthkr@outlook.com
01544 388810



Picture – thanks to Hugh Vernon. It is dated November 11th 1928.

Caps and hats were obviously standard garb.

FMMP INVITE YOU TO A
COLOUR FASHION SHOW
TUESDAY 17TH OCTOBER
KINGSLAND CORONATION HALL
DOORS OPEN 7PM FOR 7.30PM START
£5 TICKET TO INCLUDE A DRINK
Charity number 1100183

Friends of Mortimer Medical Practice (FMMP) are holding a colour fashion show. Any proceeds will go towards vital equipment for Leintwardine, Kingsland & Orleton surgeries, many of which enable patients to have tests carried out at the surgeries. Recent equipment purchased include medicine fridges, blood pressure machines, couches, procedure lights, hearing loops, cubicle curtains to name a few!

Please support this fundraiser where high street clothing will be on sale for 50% of retail price.

Tickets:

Orleton:	Di 07790327068
Yarpole:	Helen 780189
Kingsland:	Sheila 708722
Leintwardine:	Gaye 01547540631

EARDISLAND WEATHER REPORT

For the time of the year in Eardisland there was a notable increase in the rainfall for July with 90mm (3.54 inches). Temperatures ranged from 15°C to 30°C and barometer pressures ranged from 29.3 to 29.8. River levels ranged from 10 inches to 20 inches.

August has seen still more rain with 77mm (3 inches) recorded. Temperatures ranged from 14°C to 30°C, and barometer pressures ranged from 29.4 to 29.92. River levels ranged from 10 to 18 inches.

Equivalent rainfall for 2022 was July 20mm (0.78 inches) and August 45mm (1.77 inches)

Nature-wise the nesting swans deserted their eggs for the second year running.

Doug Tantrum reporting from Kingfisher House



EARDISLAND NEIGHBOURHOOD WATCH

I start off with what's becoming a regular theme, still no progress on obtaining replacements for our aging Neighbourhood Watch road signs, and nothing further to report on the Police and Crime Commissioner's Smartwater villages initiative. Let's hope that I finally have some positive news to report in the next edition.

Recently, as well as a break into an outbuilding, there was a report of a male acting suspiciously in St Mary's Walk late at night. We may live in a relatively low crime area, but we don't live in a zero-crime area so we need to remain vigilant and report any suspicious activity to the Police as the information you have may, no matter how trivial it may seem to us, might be just the information the Police need to solve a crime, or better still, to prevent a crime from happening.

There are some parts of the Parish that are not yet represented in our membership so please consider joining us. If you are interested in joining this scheme, you will need to become a member and then join the Eardisland scheme using the following link: <https://members.ourwatchmember.org.uk/join> to register by providing your personal details. Once you have done that and you are in your account, select the 'Manage Schemes' option in the 'dropdown' under 'Neighbourhood Watch Tools' in the top banner on the page, then click on the yellow 'JOIN OR APPLY TO CREATE A NEW SCHEME' bar and follow the process, selecting Eardisland to join this scheme and gain access to regular security hints as well as discounted security equipment and home insurance.

If you have any questions on membership please get in touch, or if you don't want to join online, give me a call with your name, address and contact details and I can complete the membership process on your behalf.

Joe Logan

Westgate, Eardisland HR6 9AR, Phone: 01544 388878
Email: eardisland_neighbourhood_watch@hotmail.com (please note the 2 underscores)

EARDISLAND ENVIRONMENTAL AND SUSTAINABILITY GROUP

The E&SG is a working group of the Parish Council, anyone interested in making Eardisland a more sustainable parish is welcome to come along.

DEFRA Hedgerow Consultation

As EU land-based subsidies are replaced with DEFRA's new farming schemes regulations about managing and protecting hedgerows are being re-written. Hedgerows are important ecological building blocks across our landscapes. They provide habitat, act as wildlife corridors, slow soil erosion and water run-off, support crop pollinators and sequester carbon.

DEFRA are consulting on how to change legislation and approaches to enforcement and are asking farmers, organisations, and members of the public to read the short consultation document and share their views on the plans.

Please visit this link (or search DEFRA hedgerow consultation) if you are interested:

<https://consult.defra.gov.uk/legal-standards/consultation-on-protecting-hedgerows/>

This consultation closes on the 20th of September 2023.

Village Hall Energy Performance

Following on from the hall's recent Energy Performance Certificate, the E&SG is coordinating with the Parish Council and Village Hall Management Committee to improve the property's energy efficiency.

This may include measures like increased insulation, replacement lighting, and installing secondary or double glazing.

Ben Woodcock

b3nwoodcock@gmail.com

01544 388976

COMMUNITY GARDEN

Thanks to everyone who has helped this year!

It's been a good year for green beans and courgettes, and there should still be some to pick well into September along with some raspberries. Please help yourself.

It also looks like there is going to be a good crop of pumpkins towards the end of October. Please leave picking them until the October half-term holiday, also please only take one per family.

Next meeting Sunday 30th September at 10am for some tidying up and weeding, then a final meeting of the year in the October half-term.

TREES OF EARDISLAND

The Environment & Sustainability Group received funding to look at trees in the parish as part of understanding the importance of Eardisland's trees and how we can look after them. Details of all trees surveyed can be found on <https://treezilla.org/>

Ash - Fraxinus excelsior

Location: End or Burton Lane

Height: 17 metres

Trunk diameter: 100 cm

Leaf area: 530 square metres

Carbon Dioxide stored: 2500 kg to date

Carbon Dioxide removed: 41 kg a year

This tree removes about the same amount of carbon each year as it takes to produce 13 litres of cow milk or 46 litres of oat milk.

Ash dieback (a fungus) will kill around 80% of ash trees across the UK over the coming few decades.

Ash trees make up 12% of British woodland with another 60 million trees outside woodland.



AN EMAIL REQUEST TO THE EDITOR

I am interested in finding out more about the manor of Bidney and specifically the Boyle family, who in my research owned/resided there possibly from the 13th century. Where was/is the Bidney house? There was an article on Bidney Mill on the History Group's site.

This Boyle family were the ancestors of the Earls of Cork and I can trace a direct line in my family back to the Boyle's of Bidney (Lodovic Boyle born c 1240 - my great (x18) grandfather!).

Martyn Guy

(living at Ewyas Harold, down in the deep Herefordshire south-west)

I received this from Martyn. The group referred to is the Eardisland History and Archaeology Group. I can't find the referenced piece. Can anyone help? Please contact the Editor if you can.

CHURCH MATTERS

All are most welcome to services and will find a friendly and caring community. Come along and find out more; contact us too, if you are interested.

If you would like to volunteer to read a lesson, lead prayers, become a welcomer, sing, play, look after the church in any way or choose a hymn for a special occasion, please let us know.

Priest-in-Charge:	Rev. Julie Read, The Rectory, Kingsland. 07826 194400, rev.julie@hotmail.com	01568 708255
Curate	Rev Rosie Roberts	tba
Reader	Rosie Capon	07811 436412
Churchwarden and Organist	Annette Blyth	01544 388241
Deputy Churchwarden	Dian Cope	01544 388317
Treasurer:	Mike Coleburn	01544 388486
PCC Secretary:	Avis Denny	01568 780874

Services at St Mary the Virgin, Eardisland and in the Benefice

Date	Time and type	Which church?
Sun 10 th September	9.30am iSingPoP	Eardisland
Sun 17 th September	9.30am Morning Prayer	Eardisland
Sun 24 th September	9.30am Holy Communion	Eardisland
Sun 1 st October	11am Harvest Festival – Hymns and Readings 12.15pm Harvest Lunch	Eardisland
Sun 8 th October	9.30am iSingPop	Eardisland
Sun 15 th October	9.30am Holy Communion	Eardisland
Sun 22 nd October	9.30am Holy Communion	Eardisland
Sun 29 th October	10.30am Benefice Service	
Sun 5 th November	9.30am Holy Communion	Eardisland
Sun 12 th November	Remembrance Sunday 10.45am at War Memorial followed by church service	Eardisland

HARVEST FESTIVAL AND LUNCH

Sunday 1st October 11am – A service of harvest readings and hymns

12.15pm Harvest Lunch of jacket potatoes with filling followed by dessert – **please book a place** by contacting Annette or Dian, or sign up on the list in the church.

Bring your own cutlery, plate and dish please. Donations towards costs and small bar available.

The new Lectern Bible will hopefully be in place by then so it will be dedicated at the Harvest Service. We had a special collection at the Coronation Service to raise money for it and many villagers have kindly made donations. This will mark the beginning of King Charles III's reign and will be in use for future generations.

Everybody is most welcome to join in for the service and/or lunch; friendship, fellowship and food all in one place. Do invite family, friends and neighbours and especially anybody who might be on their own.

We would also be grateful of food donations for Leominster Food Bank as our Harvest Offering. Details of items needed most will be on church notice boards nearer the time.

WANTED FOR STALL AT CRAFT FAIR

October 7th – we have decided to have a stall where we sell 'stuff' to the crafters who will hopefully be visiting the fair. Crafters generally have a 'stash' of goodies for their hobby, and they buy them whenever they are attracted to them, just in case they ever need them! So, we would ask you all if you can have a look through your cupboards and donate anything that we could tempt them to buy everything must be clean and in good condition, please. Buttons, rolls of thread, lace, ribbons, wool, felt, fabric of any size (and if there are only a few small scraps quilters will buy them) pretty papers, small boxes, tissue paper, brushes for art, small containers (useful for keeping buttons etc in), sequins, embroidery thread, seashells.....the list is endless.

Even if you haven't got much, we will be able to put it in rummage baskets (oh, how crafters love those!) or in packs that match other contributions so everything will get used. Check with Di and me if you are not sure.....we would probably want them in the week beginning **24th September** so we have time to sort and gather.

Annette Blyth
01544 388241

ADVENT ANGEL FESTIVAL

We are putting together ideas for this festival which will hopefully run throughout Advent and be a delight to see for villagers and visitors alike. We would like to ask any individuals or village organisations if they would like to make an angel to display in the church – tiny, small, medium or large. They can be sewn, knitted, painted on wood, framed, made out of ribbon, scraps, angels in boxes from matchboxes to shoeboxes; unfortunately, we cannot display angels just painted or drawn on pieces of paper.

We will be having a Memory Angel section where a small angel can be hung in memory of someone special to you. Christmas can be a difficult time for missing people who have been part of your lives so to include them will honour them and the love they brought and left behind.

They must be **predominantly white** and must have a loop or a hook on the back so they can be suspended. Please try to make the angels out of materials you already have – Eardisland is committed to sustainability and recycling.

If you can help with making, displaying, advertising or organisational skills and ideas, this would be really appreciated. It would be wonderful to have a community effort to put this exhibition on, just as we did for the Coronation and the craft fairs.

More details in the next Parish Magazine, but in the meanwhile there will be items on the church noticeboards and on the village Facebook page and website. Or you can just ring us! Can we get 500 angels, do you think?? What an exciting thought!

CHURCH CLOCK – You may have noticed an absence of chimes recently or noticed that the hands have stopped. There have been some problems with the striking mechanism and at the moment some parts of our village clock are being repaired in Mansfield; very sadly the news is that it is going to need further dismantling and work done on it which will probably be quite costly. We are awaiting further news ...

Annette Blyth
Church Warden

FROM REV. JULIE READ

A new school year and a new start for many families. The days are shortening and it's time to get out those projects that we've saved for the Autumn and Winter. Perhaps you would like to join with the Angel Fest Project in making Angels to fill Eardisland Church in December. An opportunity to use your craft skills to make a wonderful display. Do speak to Annette or Dian if you would like to help with this. And I wonder if any of you have seen an angel. I spoke to someone this summer who had seen one and it was glorious. I wonder if this reality is there all around us and we are just not looking for it. Let me know if you have stories to tell.

I sing Pop returns to Eardisland Church on the 2nd Sunday of the month at 9.30am. We have run for a year now and are in gear for another year of craft,

music, prayer and refreshments. Do come and give it a try, even if you don't have children, it is a space to talk about faith and is welcoming and warm. There will be fliers coming out with invitations to this and I hope you will come and see what it is all about.

I think over the last couple of years, with Covid and all that, I have not been around at Eardisland events as I have in the past, and I am conscious of this. Please if you would like a visit or need to chat about something please do send me an email on rev.julie@hotmail.com or leave a message on **07826 194400**. It isn't that I haven't wanted to do this, but sometimes life just goes in

constraining directions. You will also be aware that we have a new curate, Rosie Roberts, in our midst, and she is instrumental in putting an event on in Kingsland Coronation Hall in which you might be interested. It is basically telling her life in important music (a lot like desert island discs) and telling how she found Christian Faith in the midst of this. If you would be interested in coming you would be most welcome.

Looking forward to an exciting Autumn,

Every Blessing, Julie



My Life in Music
A journey of life and faith

Featuring
Rev Rosie Roberts,
Curate of the Mortimer's
Cross Churches,
in conversation with
Rev Julie Read

Saturday 30 September, 7pm
Kingsland Coronation Hall
FREE - includes dinner and a drink

Booking essential: tickets available at
ticketsource.co.uk/the-mortimers-cross-churches or 07720 333383





17TH CENTURY NUN'S PRAYER

LORD Thou knowest better than I know myself that I am growing older and some day will be old. Keep me from fatal habit of thinking I must say something on every subject and on every occasion. Release me from craving to straighten out everybody's affairs. Make me thoughtful but not moody; helpful but not bossy. With my vast store of wisdom it seems a pity not to use it all, but Thou knowest Lord that I want a few friends at this end.

Keep my mind free from the recital of endless details; give me wings to get to the point. Seal my lips on my aches and pains. They are increasing, and love of rehearsing them is becoming sweeter as the years go by. I dare not ask for grace enough to enjoy the tales of others' pains, but help me to endure them with patience.

I dare not ask for improved memory, but for a growing humility and lessing cocksureness when my memory seems to clash with my memories of others. Teach me the glorious lesson that occasionally I may be mistaken.

Keep me reasonably sweet; I do not want to be a Saint – some of them are so hard to live with – but a sour old person is one of the crowning works of the devil. Give me the ability to see good things in unexpected places, and talents in unexpected people. And give me, O Lord, the grace to tell them so. Amen.

The source of this prayer is unknown, it is anonymous.

The prayer was given to me by Nicole Adams and was found amongst her mother's belongings.

Ed.



Herefordshire
Historic
Churches
Trust

Charity number: 51181

Coffee Morning

*The Haywain, Lyde Arundel,
Nr. Hereford HR4 7SL*

by kind invitation of Lydia and Tomáš Alexovi

Thursday 5th October 2023

From 10am 'til 12 noon

Cakes, Preserves and Produce Stall. Raffle.

*If you're unable to attend but would like to make a donation, please send
cheques payable to: HHCT c/o Mrs Sue Burleigh, Stansbatch House,
Stansbatch, Leominster, Herefordshire HR6 9LG - tel. 01544 267368*



EARDISLAND IN BLOOM

The last couple of months has seen us busy with a variety of tasks, thankfully one of which has not been watering!

We've added significantly to the Manor House border, planting over 40 perennials and re-stained several benches, particularly those facing the millstream. Sandy Ross and David Millin spent a huge number of hours in the water, clearing weed to facilitate perfect conditions for the duck races.

Most of you will have noticed the changes we've made to the Manor House border opposite Rita's Tearooms. This area, due to tree overhang, receives very little rainfall resulting in plants drying out and dying. By introducing small stones, the plan is to plant drought-surviving plants, succulents, and alpines. If you'd like to help by donating, your contribution will be gratefully received. Please leave them next to the bench adjacent to this area or bring them along on a Thursday morning for us to plant.

CRAFT & PRODUCE FAIR

As we draw closer to the big day (Saturday 7th October) I would like once again to appeal for your help and list below when this is required.

Wednesday 4th October: 10.00 – to erect the marquee in the church grounds.

Friday 6th October – hours to suit between 14.00 – 18.00, assisting stallholders to unload, thus ensuring a quick turnaround.

Saturday 7th October: from 07.15, to assist with stallholders unloading.

In addition, we require dozens of pairs of hands to assist with serving refreshments in the village hall, car parking stewards, tickets sellers and stewards inside the church. All these shifts are 2 hours, although if you can do more all the better.

We are also seeking one, ideally two volunteers who are early risers, to start stallholder parking on the recreation ground. This will be from 07.15 on

Saturday 7th.

Monday 9th October: 14.00 – to dismantle the marquee.

If you can help in any way, please speak with either myself, Richard Kirby, Susie Curtis, or email eardislandcfair@btinternet.com

Thank you!

Phil Milchard

LANDLINE SERVICES ARE CHANGING IN THE UK

The old system will be switched off in 2025 and landlines will use broadband to make calls. If you rely on a landline, you will still be able to make calls but the technology that powers them will be different.

I rely on a landline - can I still use it?

Yes, you will still be able to have a landline in your home.

The change means the landline will use the internet to make calls, rather than old copper network (known as PSTN, or Public switched Telephone Network).

The new system is called Voice over Internet Protocol (VoIP) but providers also have their own names for it such as BT Digital Voice.

What if I don't have an internet connection at home?

For those without a broadband connection at home, your supplier will install one.

If you only want to use broadband so you can keep your landline, that's fine.

Where broadband is just being used to power the telephone, your supplier should not charge you extra.

Both BT and Virgin have committed to not charging customers any extra for landline-only broadband connections.

I have broadband at home, does that make things easier?

If you already have a broadband connection, the switch should be fairly straightforward. Your phone will be plugged into your router or a new socket, which in some cases will need an adaptor supplied by your provider.

Will I need to get a new landline phone?

You should be able to keep your current phone. If it's very old, you might need to upgrade it.

Can I keep my current number?

Yes, you can keep the same number.

Once I've gone digital, will my landline work any differently?

Your landline will still feel like your old landline after the switch - including a dial tone when you pick it up. Digital lines also provide clearer and better quality calls, providers say.

If I'm not paying line rental for a landline, will my bills get cheaper?

Unfortunately, it seems like they won't. In the eyes of phone providers, you're still getting the same service - it's just the technology that has changed.

Here's what a Virgin Media spokesperson said: "As customers will still be able to use their landline service, they will not see a reduction in their bills."

BT also won't be lowering its prices after the switch. "You'll still have the same service, and your price plan and bills will stay the same," a spokesperson said.

When is the changeover happening?

The deadline for the switch is December 2025, but providers have already started moving people over. Your phone company will contact you when they want you to change.

Why is the old network being switched off?

The analogue network dates back to the 19th century - and in some cases relies on infrastructure dating back that far. It's becoming harder and more expensive to maintain, so it needs to be replaced. Switching to digital brings the phone network in line with other advances in the digital world.

What about other devices that use a phone line?

Other devices including telecare services, personal alarms and security alarms use the phone network.

Some existing devices will continue to work using digital phone services, but others will need to be replaced.

If you use telecare services, you may want to let your phone provider know in advance of the switchover. You can also contact your telecare provider to check if your devices will work with a digital connection.

EARDISLAND HISTORY

Readers may remember from a previous article in the parish magazine, that the Eardisland History Group was creating an archive of all the research and projects they have undertaken in the last thirty years.

The archive is lodged in the Muniments Room in Burton Court and comprises three, four-drawer filing cabinets housing nearly two hundred files. In addition, the group are organising further files together with a collection of pottery and other artifacts.

The archive has been arranged under the following headings:

General information about the parish and conducting historical research

Oral History Project (Commenced 1993)

Burton Court

The Manor of Burton

Archaeology Projects

Maps of the parish

Buildings in the parish

Field Names Project

Mills in the parish

Schools and places of worship

Soldiers and war

Special events in the village

Projects miscellany

Photographs of local interest

Cricket in the parish

Twinning with La Vieille Lyre

Village occupations

Meetings with the County Archaeologist

Presentations

Minutes, meetings and reviews

If anyone has a special interest in any of these topics and wishes to have access to the archive, could you please contact Ed Simpson at Burton Court (01544 388222). The material can be borrowed. There is a book to record any loans from the archive to ensure that the archive remains intact for future generations.

Lorna Selfe

www.bill-jackson.co.uk

Local People - Expert Knowledge - National Marketing



Sales
Lettings
Auctions
Commercials
Land & New Homes

jackson property

Hereford - Leominster -- Mayfair

Proud supporters of  **The Cart Shed** charity

Leominster | 01568 610 600

Hereford | 01432 344 779



Fern Landscapes & Construction

Design Create Maintain



With over 35 years' experience in horticulture. From maintaining through to designing your perfect garden.

Contact Mike James on 07813111543

Email: mjames100@hotmail.co.uk
website: www.fern-landscapes.co.uk



Hereford Centre For Natural Health



THE Centre in Hereford for Complementary Therapies

18 different therapies provided by
highly trained and experienced staff.

The Very Best Help for Your Health

Eastholme Avenue, Belmont, HR2 7XT
Hereford Tel: **01432 279 653**
www.herefordcentrefornaturalhealth.com

HARDWOOD LOGS FOR SALE

C. 5M3 OF SEASONED FIREWOOD AVAILABLE

95% QUALITY ASH



CAN DOORSTEP DELIVER IN BIG BAGS OR SMALL BAGS

Please phone or email: 07465 216958

cubsandwots@outlook.com

LEOMINSTER OSTEOPATHS

a multi-disciplinary clinic, passionate about caring



Reduce Pain Restore Health <ul style="list-style-type: none">✓ Back, neck & body pain experts✓ Our osteopaths have been treating people with chronic pain & acute injuries since 1989	Hearing Health Clinic <ul style="list-style-type: none">✓ FREE Hearing Health Assessments✓ Gold Standard earwax removal✓ Extensive range of hearing solutions	Holistic Massage Therapy <ul style="list-style-type: none">✓ A tailored therapy that treats the individual as a whole✓ Promotes physical and psychological wellbeing
Nutritional Therapy <ul style="list-style-type: none">✓ Transform your future health with the power of nutrition✓ Tailored support programmes Book a FREE Nutrition consultation to learn more	Foot Health Services <ul style="list-style-type: none">✓ Caring, experienced Foot Health Practitioner✓ Foot and toenail treatments for optimal foot health	Spinal Decompression (IDD) Therapy <ul style="list-style-type: none">✓ Targeted treatment protocol for persistent sciatica, back, neck or leg pain✓ FREE spine check consultations



THE OSTEOPATHS

LEOMINSTER | MARTLEY

Find us next to the Co-op car park in Leominster

TALK TO US

01568 610610

enquiries@leominsterosteopaths.co.uk

www.osteopathicclinic.co.uk

Foot Health Practitioner



Treatment for :

- Painful Corns and calluses
- Ingrown toenails
- Verrucae
- Diabetic foot care
- Nails trimmed/ reduced
- Plus other skin/nail complaints



Home visits only

Member of The British Association of
Foot Health Professionals

HEATHER FOOT HEALTH

Heather Hannant MCFHP MAFHP

01568 760839

07966 136491

MADE TO MEASURE CURTAINS

From simple unlined curtains to sumptuous interlined curtains, pelmets, Roman blinds and cushions.

Free measuring service and plenty of friendly advice on hand to help you make the right choice with fabrics and design!

Very competitive rates. References and portfolio available.

Call Jean today

01544 388619

07796 850795

jean@seagrasscottages.co.uk



Original Furniture

Designers and makers of
quality furniture and joinery.

Experienced in design and making
furniture for both residential and
commercial settings.

Commissions include individual pieces,
bespoke kitchens and more.

We also repair and revive older quality
furniture.

Contact us for more information.

p: 07973 859756

w: dtbo.co.uk e: steve@dtbo.co.uk

Herefordshire's friendliest live-in care provider.



Live-in Care | Respite | Companionship

We are very proud of our company culture. We are positive and open minded, we find solutions, and we live by our principles. We are very proud that it has won us an 'Outstanding for Caring' rating by CQC.

www.kembleathome.co.uk

01432 382017 | enquiries@kembleathome.co.uk

[Sigeric](#) Business Park | Holme Lacy Road | Hereford HR2 6BQ

FIREWOOD FOR SALE

100% Hardwood Logs

Air dried

All sourced from our farm

Local delivery available

01544 388217

07930 867362

Hardwick Farm

hardwickfarm@icloud.com

DAVE NEWTON

AND SONS

HOME AND GARDEN MAINTENANCE

Gardening throughout the year, including
pruning, hedging, fencing, paving and
grass cutting.

Home: 01568 647048 Mobile: 07771 870210

Timberworld Products Limited

MANUFACTURERS OF QUALITY TIMBER BUILDINGS



**Garages · Carports · Stables · Field shelters · Sheds
Workshops · Offices · Summerhouses · Gazebos
Pergola · Club houses · Dog kennels and log stores**

www.timberworldproducts.com

Tel: 01568 708549

MATHS TUITION
FOR AGES 8 TO 14 YEARS

Arithmetic and GCSE Topics

30mins £20

60mins £30

Contact: JackyDiane Aldridge BSc

Email: mathematics-tuition@hotmail.com

**SHORT OF SPACE, MOVING HOUSE,
BUSINESS EXPANDING – DON'T WORRY!!**



**There is a modern secure internal
Self-Storage facility at Hardwick Farm
just off the A44**

- Accessible 24/7 with electronic fob key
- 11 CCTV cameras and fully monitored alarm system
- Suitable for document storage to comply with GDPR
- Storage for motorbikes, cars and caravans also available

Prices fixed for 2 years - guaranteed

www.barn-store.co.uk/pembridge

01544 388217





PASSIONATE ABOUT SHARING OUR LOVE FOR THE
HIGHEST QUALITY PRODUCTS FROM HOME & ABROAD.

SPECIALIST AND HARD-TO-FIND INGREDIENTS, ARTISAN
BREAD AND PASTRIES, DRINKS, CONFECTIONERY AND
CHARCUTERIE, CHEESE & ANTIPASTI COUNTER.

HAMPERS AND UNIQUE GIFTS.
LUNCHES, COFFEE, PRIVATE DINING. FULLY LICENCED.

01568 250 290

WWW.DRAPERSLANEDELICATESSEN.CO.UK

DRAPERSLANEDELICATESSEN@GMAIL.COM

27 DRAPERS LANE, LEOMINSTER HR6 8ND



www.herefordoakbuildings.co.uk

TRADITIONAL OAK BUILDINGS

GARAGES • EXTENSIONS • CARPORTS
MORNING ROOMS • PORCHES

WE ALSO MANUFACTURE BESPOKE JOINERY

DOORS • WINDOWS
STAIRCASES • GATES • BOOKCASES

01568 720266 / 07966 535737

Monkland Leominster HR6 9DF

M D R ELECTRICAL

Mark D Ridge (Proprietor)

NICEIC Registered

ALL ASPECTS OF ELECTRICAL WORK UNDERTAKEN



EV CHARGING POINT INSTALLATIONS

Showers, Fuseboard upgrades, Extra sockets, Lights,
Security lights supplied & fitted.

Power supplies to garages and outbuildings.

Full/Part Rewires, New builds & Conversions.

Condition reports/Landlord certificates, PAT Testing.



PUBLIC LIABILITY & PROFESSIONAL INDEMNITY INSURANCE COVER

Call MARK: 07760 433479 OR 01544 327161

or email: mdrelectrical330@gmail.com

CONTACTS

Editorial: CHRIS BIVAND
Arrow Bank, Eardisland, Leominster, HR6 9BT
☎ 01544 – 388375
Email: chrisbivand@gmail.com

Advertising: PATRICIA GILL
☎ 01544 – 388757
Email: parishads@btinternet.com

Distribution Manager: BARRY FREEMAN
☎ 01544 - 388226

Website: BEN WOODCOCK
Email: ben@eardisland.org.uk

Printed by PIP Printing, Hereford
© Published and copyright: Eardisland Parish Council 2023

Views expressed are those of individual contributors and not necessarily those of Eardisland Parish Council. The Eardisland Parish Magazine is published by Eardisland Parish Council without inserts. The Parish Council's magazine contact is Cllr. Richard Davies. The Eardisland Parish Magazine is posted online in pdf format on the village website: www.eardisland.org.uk.

Under the General Data Protection Regulation (GDPR) individuals must give positive consent for their personal data to be held and published. Both the Parish Council and the Community Website have a responsibility to comply with the GDPR. Therefore, by actively submitting an article for publication in the parish magazine, you are giving positive ongoing consent for your data to be held and published in the magazine in paper and online format. Please contact the magazine editor if this is not acceptable to you.

Copy date for the next edition of the Eardisland Parish Magazine:

FRIDAY 17th NOVEMBER 2023



Eardisland Village Show

Saturday 2nd September 2023

This was a very popular event which, for the second year, combined the traditional village event with a dog show.

The weather was fine, after a period of rain and wind, and the occasion was a great success.

The team, led by Susie Curtis, did a remarkable job in putting the whole show together.